

## Statistics

### STUDENT POPULATION

Enrolments: **7,766**  
(Full-time: **5,937**)

First in family to attend university: **49%**

Permanent residents of the Sunshine Coast: **78%**

Female: **65%**

International students: **10%**  
(61 countries represented)

Indigenous Australian students: **1.7%**

Average age of a USC student: **25**

Under 21 years: **44%**

21–30 years: **32%**

30+ years: **24%**

Undergraduate students: **6,142**

Postgraduate coursework students: **680**

Postgraduate research students: **141**

Non-award students: **803**

Students participating in the Global Opportunities Program in 2010: **82**

Students participating in industry professional placements and internships in 2010: **1,345**

### GRADUATES

**9,505** graduates up to the April 2011 Graduation ceremony.

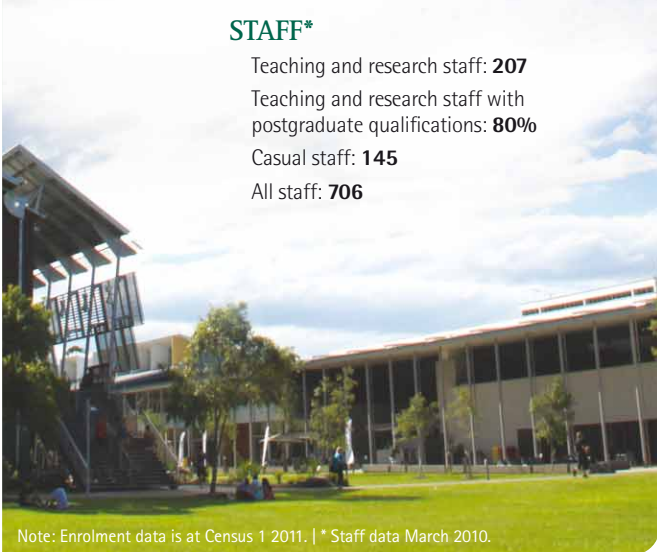
### STAFF\*

Teaching and research staff: **207**

Teaching and research staff with postgraduate qualifications: **80%**

Casual staff: **145**

All staff: **706**



Note: Enrolment data is at Census 1 2011. | \* Staff data March 2010.



### Contact

#### University of the Sunshine Coast

Sippy Downs Drive  
Sippy Downs  
QUEENSLAND  
AUSTRALIA

Tel: +61 7 5430 1234

Fax: +61 7 5430 1111

Email: [information@usc.edu.au](mailto:information@usc.edu.au)

Web: [www.usc.edu.au](http://www.usc.edu.au)

CRICOS Provider Number: 01595D

For directions: [www.usc.edu.au/maps](http://www.usc.edu.au/maps)

#### Postal address

University of the Sunshine Coast  
Locked Bag 4  
MAROOCHYDORE DC QLD 4558  
AUSTRALIA

#### Study enquiries

Student Administration

Tel: +61 7 5430 2890

Email: [information@usc.edu.au](mailto:information@usc.edu.au)

[www.usc.edu.au/studentadministration](http://www.usc.edu.au/studentadministration)

#### Alumni and gifts

University Foundation

Tel: +61 7 5430 1104

Email: [foundation@usc.edu.au](mailto:foundation@usc.edu.au)

[www.usc.edu.au/foundation](http://www.usc.edu.au/foundation)

[www.usc.edu.au/alumni](http://www.usc.edu.au/alumni)

#### USC Link

A single point of contact for business, industry and the community to access the resources of USC.

Tel: +61 7 5456 5028

Email: [uslink@usc.edu.au](mailto:uslink@usc.edu.au)

#### USC International

Tel: +61 7 5430 2843

Email: [international@usc.edu.au](mailto:international@usc.edu.au)

[www.usc.edu.au/international](http://www.usc.edu.au/international)

#### Innovation Centre

Tel: +61 7 5450 2600

[www.innovation-centre.com.au](http://www.innovation-centre.com.au)

Published by University of the Sunshine Coast June 2011.  
For the most up-to-date information, visit [www.usc.edu.au](http://www.usc.edu.au)

About  
**USC**



University of the  
Sunshine Coast  
The best of both worlds



# The best of both worlds

At USC, students receive a high-quality educational experience, while enjoying the relaxed lifestyle that the Sunshine Coast offers. Students benefit from a friendly and supportive campus environment, access to highly-qualified teaching staff, personal attention, and modern technology and facilities. Study choices are wide and degrees are complemented by opportunities to gain practical experience and travel overseas.



## University vision:

**The University of the Sunshine Coast is regionally relevant and recognised, nationally and internationally, for excellence in teaching, research and engagement.**

## Growing

USC is Australia's fastest growing university, serving the Sunshine Coast and extended region from north Brisbane to the Fraser Coast. The University opened in 1996 with 500 students. It was the first greenfield public university to be established nationally since the early 1970s.

Today, with about 8,000 enrolled students, USC is on track to reach projected student enrolments of more than 15,000 by 2021.



## Choice

USC offers more than 140 undergraduate and postgraduate study programs in business and information technology; communication and design; education; health; humanities and social sciences; and science and engineering.

Degrees can include elective courses and specialisations across a range of disciplines. Entrepreneurship or sustainability can be studied as part of most degree programs. Academic programs are designed with industry to meet regional needs and often include opportunities for work experience, internships and practical industry-based projects.

## Excellence

USC has a proud record of achievement in learning and teaching. It is the only Queensland public university to consistently rate 5 stars\* for teaching quality, and wins more than its share of national teaching awards. It also rates higher than any other public university in Queensland for graduate satisfaction. Students and graduates regularly remark on the quality of their experiences and the personal nature of the teaching and support they receive.

\* The Good Universities Guide 2011



## Lifestyle

The University's location on Queensland's Sunshine Coast offers many lifestyle benefits including beautiful beaches and stunning hinterland, a warm climate, and a relaxed and friendly community.

The campus is located 90km north of Brisbane, Queensland's capital. Travel to campus is easy with quick access to the Bruce Highway and Sunshine Coast motorway. On-campus parking is free. An on-campus bus interchange, and pedestrian and cycle paths connect the University to surrounding suburbs.

## Environment

USC's campus at Sippy Downs features modern, distinctive architecture and environmentally sensitive design. It has been recognised with more than 30 awards in planning, architecture and construction.

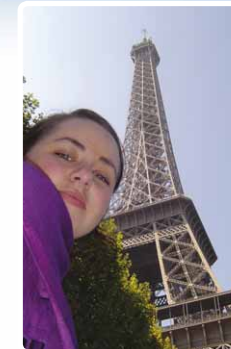


The campus is fully equipped with cafés, an art gallery, award-winning library, bookshop, 24-hour computer laboratories, lecture theatres, and high-tech teaching spaces including science and sports laboratories. The sports precinct includes an international-standard athletics track, an indoor sports stadium with gymnasium, and an Olympic-standard swimming pool. Bordered by Mooloolah River National Park, the University grounds provide sanctuary for native wildlife, including wild kangaroos. USC operates a study centre in Noosa and a research facility on Fraser Island.



## Support

USC students benefit from a supportive approach and ready access to teaching staff who are highly qualified. A full range of support services assist students to overcome challenges to study, and many USC students are from identified equity groups. Close to half of undergraduate students are the first in their family to attend university. And, each year, more than 500 undergraduate students receive financial support from scholarships and bursaries worth more than A\$1.2 million.



## Experiences

Strong partnerships with industry and work integrated learning experiences provide a practical focus to study and open doors to employment. Through USC's award-winning Global Opportunities Program students can earn credit towards their degree while studying at partner universities around the world. At the same time, about 10 percent of students come from other countries to study at USC. The Innovation Centre supports local knowledge-based businesses and helps enterprising students and graduates in their entrepreneurial ventures.

## Research

USC undertakes research of international, national and local significance. Areas of strength include applied genetics in primary production, regional sustainability and health. Recent notable successes have included tuna breeding in captivity (collaborative research), fast-growing tropical hardwoods (collaborative research) and climate change adaptation projects. A number of USC graduates return to USC to pursue postgraduate studies and research.



## Local

The University is committed to serving the Sunshine Coast community, one of Australia's fastest growing regions. Hundreds of millions of dollars each year are contributed to the local economy through student, staff, alumni and direct institutional spending. USC employs more than 700 staff. Strong partnerships with industry link local businesses with about 1,300 students each year.



The Art Gallery and the annual community events program bring world-class speakers, entertainment and cultural events for community enjoyment. Local health and recreation is supported through the University's extensive facilities. USC provides life-long personal and professional development opportunities, with links to the University of the Third Age extending these opportunities to all generations.