

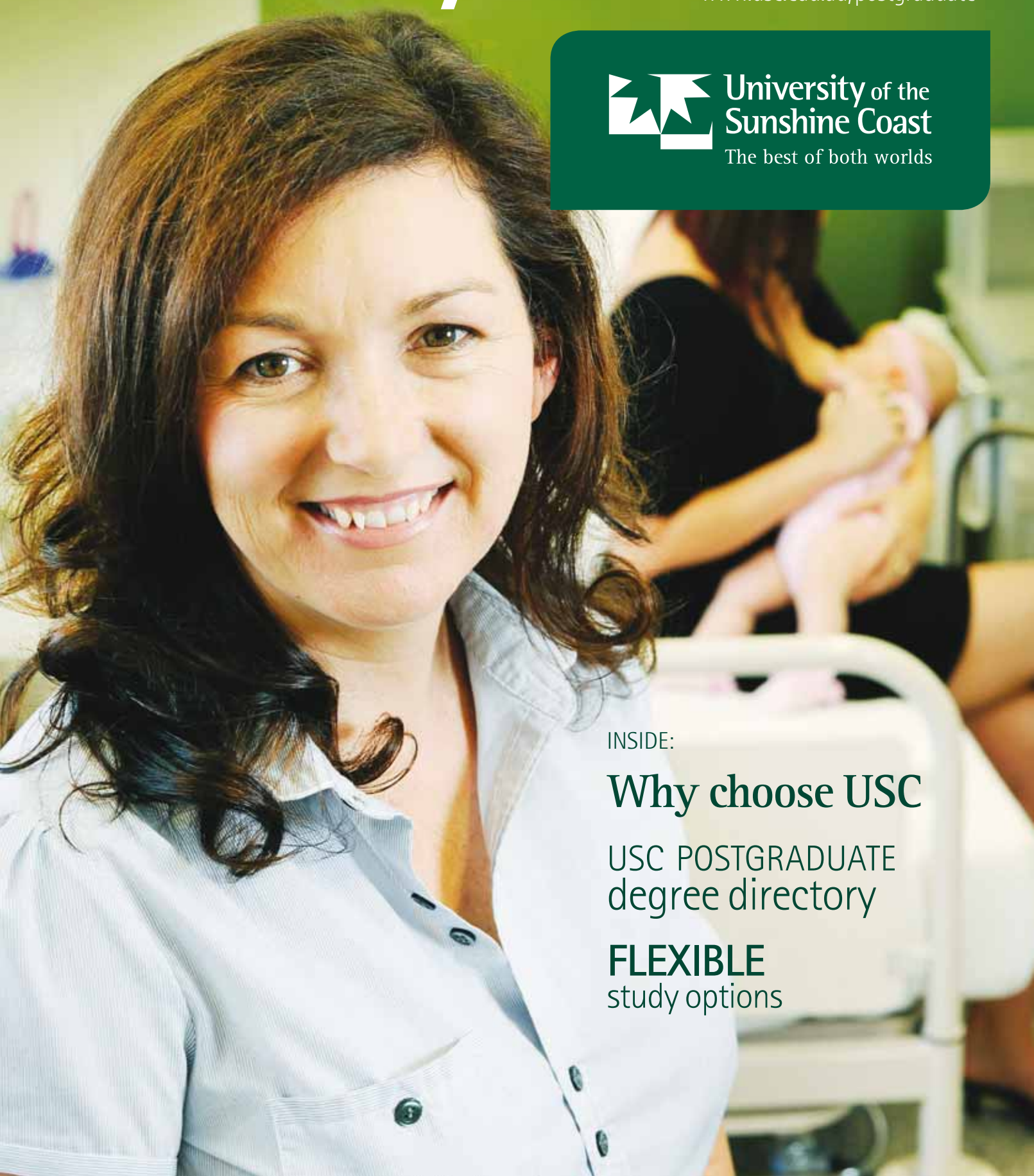
Postgraduate coursework degrees 2012

Study USC

www.usc.edu.au/postgraduate



University of the
Sunshine Coast
The best of both worlds



INSIDE:

Why choose USC

USC POSTGRADUATE
degree directory

FLEXIBLE
study options

Queensland's top ranking public university for teaching quality and graduate satisfaction.



- Teaching quality
- Graduate satisfaction with generic skills



- Graduate satisfaction with overall university experience
- Indigenous participation
- Access by equity groups

Good Universities Guide 2011



University of the
Sunshine Coast
The best of both worlds

Contents



Welcome from the Vice-Chancellor

In a world of rapid change and increasing competition, a postgraduate qualification can give you the skills and confidence to take your career to the next level.

We understand the need to balance work or family commitments with your study, and offer full-time or part-time study, flexible delivery options and support services to help you manage these demands.

As a postgraduate student at USC, you will have access to academic staff who are highly qualified and who are consistently commended for a more personal relationship with students. In fact, USC rates the highest of any public university in Queensland for teaching quality and graduate satisfaction.*

USC's modern campus with the latest facilities, coupled with our Sunshine Coast location, provides a wonderful study environment.

I encourage you to join the growing community of USC postgraduate students making their mark on the world.

Contact us to learn more about the University and your postgraduate study options.

We look forward to meeting you.

Professor Greg Hill
Vice-Chancellor and President



Why choose USC2

It's the best of both worlds. Students choose USC for a quality academic experience and the relaxed Sunshine Coast lifestyle.

Postgraduate options4

Assess your study options to decide on the best type of postgraduate experience for you.

On campus6

The best way to get a feel for the on-campus experience is to come and visit. USC students benefit from ready access to teaching and support staff in a friendly and modern campus environment.



Student support8

If you need support at any time throughout your studies, just ask. A complete suite of support services are on campus to help keep you headed in the right direction.



Study costs8

There are costs to consider when thinking about university, and there is financial assistance available.



Steps to study10

Step through the application process, and learn more about credit transfer arrangements with other institutions.



Postgraduate degree directory.....11

Choose from degrees in Business and IT, Communication and Design, Education, Health, Humanities and Social Sciences, and Science and Sustainability.

Questions? Answered 28

University staff are ready to answer your questions. Use the directory to find contacts and resources and to learn more about University terminology.

10 reasons...



1 CAREER ADVANCEMENT

Whether you're aiming for a career change or to enhance your qualifications, the postgraduate experience takes you further—it builds on the knowledge and skills that you developed as an undergraduate and opens the door to a world of new ideas, career opportunities and personal fulfilment. Choose from a coursework program for personal and career advancement, or a higher degree by research to conduct research in your field of study.

2 QUALITY REPUTATION

USC has a reputation for quality and a commitment to innovation—traits that are evident in each of USC's postgraduate programs. In this guide you will find information about the University, the postgraduate coursework programs, and the application process—everything you need to make USC your choice.

3 STUDY CHOICES

Choose from a wide range of postgraduate programs. USC offers around 50 postgraduate degrees in the areas of business and information technology, communication and design, education, health, humanities and social sciences, and science and sustainability. Refer to the degree directory on page 11.



4 YOUR CONVENIENCE

USC offers postgraduate coursework programs in a variety of delivery modes so you can choose the most convenient study option for you. Study modes include on campus, online, multi-modal, blended and intensive—a description of each mode is listed on page 4. Study modes vary between programs—refer to the degree directory on page 11.

5 A FIVE-STAR EDUCATION

Learn from some of the most highly qualified academic staff in the country. USC's academics are experts in delivering a quality education. They create an interactive, friendly and supportive learning environment, whether in a small lecture group or a one-on-one consultation. The University earned five-stars for teaching quality in the 2011 Good Universities Guide—the only public university in Queensland to be awarded five stars in this category. USC was also awarded five stars for graduates' satisfaction with the generic skills they gained while at university. This rating was the highest awarded to any public university in Queensland.



6 PERSONAL ATTENTION

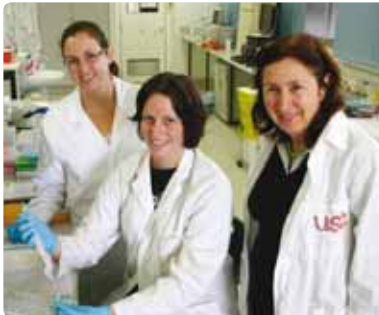
"Lecturers and tutors are easy to reach and talk to about any issues. You can usually knock on their door and see them straight away."

Amanda Bruce, graduate, Bachelor of Sport and Exercise Science and Graduate Diploma in Education



7 THE BEST ENVIRONMENT TO THINK

One of the first things you will notice on campus is the friendly and relaxed atmosphere. It isn't unusual to see kangaroos on the way to class—they are just another part of the campus community. There are wide open spaces to relax, study and meet friends. USC is also renowned for its environmentally sustainable design, distinctive architecture and modern facilities. Best of all, you are close to everything the beautiful Sunshine Coast has to offer! Discover what else is on campus on page 6.



8 INSPIRE INNOVATION

With an award-winning business incubator and accelerator on campus, you have access to the best in business. The Innovation Centre offers mentoring opportunities for entrepreneurial students, an extensive program of business events, and the prospect for students to undertake work experience with more than 30 resident businesses.

9 RESEARCH AND DISCOVER

Many USC students continue studying to gain further research qualifications, often specialising in either genecology or sustainability. USC's high quality research supervision enables research graduates to make strong contributions to Australia's economy, society, culture and environment. You could study alongside experts like Professor Abigail Elizur—who partnered research on 'tank-bred tuna' that claimed second place in Time Magazine's report on the 50 best inventions of 2009. To learn more about higher degrees by research, obtain a copy of USC's Research guide.



10 GROWTH AND OPPORTUNITY

The Sunshine Coast is now home to around 300,000 people. As the Coast continues to grow, so do the opportunities—USC graduates are increasingly able to study and embark on a range of careers in one of the country's most popular lifestyle destinations. The Coast also offers a diverse landscape for research and USC has many collaborative agreements and specialised research centres that aim to address the region's needs.



If research is your passion... you can choose from a diverse array of fields. In Communication and Design, you can pursue topics such as art and digital design, creative writing and journalism. If Humanities and Social Sciences are your focus, you can select areas such as education research, environmental studies and planning, historical studies, political studies and international politics, psychology or social sciences. As a Business student, you can choose to explore accounting, entrepreneurship, information systems, management, marketing, international business or tourism. In Health, you can undertake research in areas such as preventative health and rehabilitation or understanding and enhancing sports performance. You can research Education, and if your interest is in Science, you can investigate issues such as coastal management, climate change, water management, natural and cultural heritage, innovation, adaptive growth, and community wellbeing. So if you are considering a research pathway, get a copy of USC's Research guide, visit the website for more research ideas, discuss your ideas with the Office of Research, or contact the relevant faculty to ask about appropriate research supervision. www.usc.edu.au/hdr

POSTGRADUATE

This guide introduces you to USC's range of **postgraduate coursework programs**. Prospective research students should consult the postgraduate research guide: Research USC for the list of higher degrees by research on offer.

Who is eligible for postgraduate study?

www.usc.edu.au/postgraduate

To gain entry to most postgraduate programs, you must hold a bachelors degree or equivalent from a recognised tertiary institution. The Deans of each faculty may consider entry by non-graduates who have extensive relevant industry experience, on a case-by-case basis.

Depending on your choice of program, there can be several requirements that you must meet to be eligible for admission. Some postgraduate programs require your undergraduate study to be in the same discipline, while others expect your previous study to be in a different area. Some programs have prerequisites or require a specific GPA to gain entry, while others may require documented work experience, expect you to sit an admissions test, or attend an interview. Check the USC website for the specific admission requirements for your chosen program.

If you are considering an honours degree, get a copy of the companion publication Study USC—Undergraduate degrees 2012, or visit the website for more information. www.usc.edu.au/honours

If you want to find the answers to your own questions, or contribute to and advance the knowledge base in your field of study, you should consider a higher degree by research (HDR).

USC offers HDRs at doctoral and masters levels across most of its discipline areas. HDR qualifications can lead to careers in universities, research agencies, and research and development arms of private and public sector organisations. www.usc.edu.au/hdr

For more information contact the Office of Research.
Tel: 07 5459 4526, Email: researchtraining@usc.edu.au

Coursework

If you are looking to enhance your professional qualifications, or gain a qualification in a different area to your undergraduate degree, consider a coursework program. These programs are offered at three levels—Graduate Certificate, Graduate Diploma and Masters by Coursework—many encompassing four, eight and twelve courses respectively.

Most coursework programs can lead to further study. In many disciplines the programs are nested, which means that you can complete a Graduate Certificate then return later to complete a Graduate Diploma or Masters and receive full credit for courses completed as part of the lower award. Check the degree directory on page 11 for more information.

You need to balance your career and personal life along with your study commitments. To help reduce that pressure, USC offers coursework programs in a range of study modes:

- **On campus:** Much like your undergraduate degree, studying on campus involves lectures, tutorials, workshops and seminars, plus additional study in your own time. At postgraduate level, on-campus study modes may also be tailored to suit your program. Variations include:
 - **Multi-modal:** These on-campus programs offer you the option of switching delivery modes mid-program. If work commitments increase and you are struggling to get to campus on time, you are free to switch to online mode. This option is not available on all programs.
 - **Blended:** Some on-campus courses are delivered in a blended mode, where study is simultaneously undertaken both on campus (in lectures and tutorials) and online via access to study materials, activities and exercises on the internet.
 - **Intensive:** To provide more flexibility, some coursework programs are offered in an intensive mode. This involves short blocks of study on campus combined with independent study such as readings, exercises and the preparation of assessment items. For example, climate change courses offered in this mode involve 120 hours of study per course—60 hours on campus over six or seven days, followed by 60 hours of independent study. In contrast, the Executive MBA is delivered via intensive weekend classes once a month over two years.
- **Online:** Enjoy the freedom and flexibility of studying where you want, when you want. Online coursework programs do not require any on-campus attendance. These programs are not available to international students on a Student Visa.

Study modes vary between programs—refer to the degree directory on page 11 for more information.



OPTIONS

USC offers a range of postgraduate programs and higher degrees by research. By undertaking postgraduate study, you can further develop your knowledge base, meet professional accreditation requirements, or perform high-level research in a specific area of academic interest.

www.usc.edu.au/postgraduate

Assessment

For coursework students, assessment includes examinations at the end of sessions or semesters, regular on-going assessment by way of assignments and presentations, or a combination of these.

Some programs may also include a research component.

Program durations

The time taken to complete a postgraduate program varies significantly depending on the delivery mode and the study load. This guide lists both the standard full-time and part-time durations.

Study periods

The program descriptions in this guide list the program's commencement date. Some postgraduate programs follow traditional semester-based timing. However, increasingly, USC tailors postgraduate degrees to meet the changing needs of postgraduate students. This includes offering greater flexibility, intensive course delivery and options to study outside traditional semester-based timetables.

In addition to semesters, USC offers eleven sessions per year in which programs run for varying lengths of time. If your chosen program runs on a sessional basis, contact the relevant faculty to discuss the timing of study options available to you.



Academic calendar www.usc.edu.au/calendars

The academic calendar runs on both semesters and sessions. Some postgraduate programs are delivered on a semester basis, while others are only offered in sessions.

Sessions are shorter, and generally only apply for postgraduate study. The summer session also offers a range of postgraduate courses. Refer to the degree directory on page 11 to check the mode of delivery for your chosen program.

| Semester dates | |
|---------------------|----------------------------------|
| Semester 1, 2012 | 20 February–22 June 2012 |
| Semester 2, 2012 | 23 July–23 November 2012 |
| Session dates—2011 | |
| Session 8 | 29 August–9 December 2011 |
| Session 9 | 29 August–21 October 2011 |
| Session 10 | 24 October–16 December 2011 |
| Session 11 (Summer) | 28 November 2011–27 January 2012 |
| Session dates—2012 | |
| Session 1 | 9 January–20 April 2012 |
| Session 2 | 9 January–2 March 2012 |
| Session 3 | 5 March–27 April 2012 |
| Session 4 | 30 April–17 August 2012 |
| Session 5 | 30 April–22 June 2012 |
| Session 6 (Winter) | 4 June–27 July 2012 |
| Session 7 | 2 July–24 August 2012 |
| Session 8 | 27 August–7 December 2012 |
| Session 9 | 27 August–19 October 2012 |
| Session 10 | 22 October–14 December 2012 |
| Session 11 (Summer) | 26 November 2012–25 January 2013 |

For class timetables, refer to www.usc.edu.au/timetables

Application closing dates

USC accepts applications for postgraduate study throughout the year for all programs of study. If successful, you will be offered a place in the next semester or session (as applicable).

To commence in Semester 1, 2012, applications should be submitted by 30 November 2011.*

Exceptions for Semester 1 entry include:

- Master of Psychology (Clinical)—submit application by 30 September 2011.
- Master of Midwifery—submit application by 31 October 2011.

To commence in Semester 2, 2012, applications should be lodged by 31 May 2012.*

Exceptions for Semester 2 entry include:

- Master of Midwifery—submit application by 1 February 2012.

Most session-based applications should be submitted eight weeks before the commencement of study.* Refer to your program description and the study periods above, and use your commencement date to determine your timing to apply.

* Late applications may be accepted.





USC's award-winning campus features cafés, an art gallery and bookshop, modern library, sports stadium, athletics track and swimming pool, lecture theatres and teaching spaces, and 24-hour computer labs. The campus is a 100-hectare wildlife reserve, next to the Mooloolah River National Park.

The award-winning Library is open seven days a week during semester. In addition to its expanding collection, the Library also offers remote online access to full-text journals and databases.

As a postgraduate student, your borrowing privileges are significantly extended. Individual and group study areas, copy and print facilities, and casual seating areas cater for all study needs. The library information desk also provides library and IT assistance, as well as academic support.

www.usc.edu.au/library



Exercise more than the mind. Make use of USC's extensive sporting facilities, including a three-court indoor sports stadium, gym, Olympic-standard swimming pool, outdoor courts and playing fields, athletics track, and exercise classes. Free lunch-time sport is on offer during semester, and USC is home to a variety of sporting groups, including the Barbarians rugby union club.

www.usc.edu.au/sport



on campus

Lectures and tutorials are held in modern teaching facilities, supported by the latest technology. Custom facilities include science laboratories, a nursing ward, an occupational therapy rehabilitation room, computer-based design laboratories, a television journalism studio, and a dietetics kitchen.



Dedicated facilities include research laboratories, a sustainability research centre, sport and exercise research facilities, and a research and learning centre at Dilli Village on Fraser Island.



How often will you need to be on campus?

It depends on the study mode of your program (refer to page 11). As a rule, full-time students have around 12 contact hours per week for lectures and tutorials. Plus there is personal study time. Set aside 5–10 hours per week, per course.

Meet up with friends or your study group in a range of open study areas around the campus. For the long study sessions, there is a 24-hour student room with swipe-card access. Or take a break and relax on the grass near the kangaroos, grab a coffee at the café, browse the Co-op Bookshop or visit the Art Gallery.



For all your daily essentials the Chancellor Park Marketplace is just over 1km from the campus. Here you will find a supermarket, newsagency, bank, medical centre, travel agent and bakery. Adjoining the marketplace is a variety of retail and food outlets, as well as a tavern and sports bar.

If you want to go further afield bus services operate between USC and destinations across the coast. Students are eligible for discounted fares, meaning cheap convenient access to beaches and shopping centres. For those who drive to campus, free parking is available.

www.translink.com.au



Travel and transport

www.usc.edu.au/maps www.translink.com.au

USC's campus at Sippy Downs is easily accessible, whatever your mode of transport.

The campus is close to the Sunshine Motorway and the Bruce Highway. Parking on campus can be limited at peak times, so consider carpooling, using public transport, cycling or walking. A bicycle track links the University with Mooloolaba, a 30-minute ride away, and surrounding areas.

Regular bus services operate between the University's large bus interchange and coastal towns, local beaches and shopping centres. An integrated bus and rail service links Landsborough Station directly to the University, and from USC to Mooloolaba, Alexandra Headland, Maroochydore, Caloundra and Nambour.

As a full-time student, you can travel on concession fares—typically half the standard adult fare—on buses and trains across the Sunshine Coast. When looking for somewhere to live, check that you will be close to public transport.



Social activities

www.usc.edu.au/events

- **Art Gallery exhibitions:** The USC Art Gallery hosts a range of exhibitions throughout the year, including showcases by computer-based design students and emerging contemporary Australian artists.
- **Careers Fair:** The annual USC Careers Fair is a vital opportunity to meet and interact with prospective employers. You might even get the chance to land your dream job!
- **Entrepreneurial events:** The Innovation Centre hosts a range of events during the year for students and business leaders. It's a great way to connect, network and learn a thing or two about business enterprise.
- **Keep your knowledge up to date:** Attend some of the many research seminars conducted by academics and higher-degree-by-research students throughout the year.
- **University Games:** USC students can enter as teams into annual inter-university sporting competitions. The games, which include lots of social events, are hosted by different universities each year.
- **World Environment Day:** The Sunshine Coast World Environment Day Festival is held on campus in June. The festival is about entertaining and educating the community about sustainability and the environment through information, music, food and discussion.
- **Check the website** for many other events held on campus during the year.

At Open Day, on **Sunday 14 August 2011**, you can tour the campus and talk to academic, administrative and support staff, and current students. You can visit the campus at any other time—we're open to the public throughout the year.

The best way to get a feel for the on-campus experience is to come and visit.

All your questions can be answered in Student Central. Home to Student Administration and Student Services, drop in for support services, advice and information about being a student at USC. (For detailed course-related queries, contact your faculty.) USC International provides information and support to international students.

www.usc.edu.au/studentcentral

www.usc.edu.au/international



Technology and IT support

www.usc.edu.au/itsupport

USC received a five-star rating for electronic support for students in the 2011 Good Universities Guide. Computer services can be accessed on campus or remotely. When on campus, use the 24-hour student computer laboratories, the Information Commons in the Library, or your own laptop using wireless access or wired network connections. You can also access a variety of study resources via the internet when off campus. Use the following essential electronic tools and systems to stay connected to your study materials and student information.



Online essentials

Enrol in courses each semester and manage all of your personal information on USC Central* <http://usccentral.usc.edu.au>

The portal provides access to University information, student notices, discussion groups and Blackboard course materials, including lectures, course outlines and assessment submission* <http://online.usc.edu.au>

USC Mail is your student email system* It features a 10 GB mailbox, 25 GB of free file storage on SkyDrive† and document sharing and editing through Office Web Apps† www.usc.edu.au/usccmail

Access online Library resources such as full-text journals, e-books and essential readings www.usc.edu.au/library

Course and program information is available via the student handbook www.usc.edu.au/handbook

The Student IT Help Desk offers full IT support in-person, over the phone or via email, while also offering introductory tutorials and an online IT Services Guide www.usc.edu.au/itsupport

* Login is required to access the system. Students are provided with a login when offered a study place at USC.

† SkyDrive and Web Apps are a standard part of the Microsoft Live service but are not currently supported by IT Services. These services may be subject to internet quotas or other access restrictions.

Student support

www.usc.edu.au/studentsupport

USC's smaller campus community means support staff can provide more personalised assistance. Explore the support services available to you.

Career guidance and employment www.usc.edu.au/careerconnection

For career advice, assistance in putting together a résumé, finding a part-time job or work experience, visit Career Connection. Whether you are currently studying, about to graduate or just thinking about studying, Career Connection can assist in your career development.

Disability and equity support www.usc.edu.au/disabilitysupport

A disability or learning difficulty doesn't have to stand between you and a degree. USC is committed to providing equity of access, support and participation to all students. Specialist staff and assistive learning technologies are available if, at any time, your studies are affected by disability, injury or illness.

Enrolment and application assistance www.usc.edu.au/studentadministration

Student Administration is your primary contact point for administrative queries and for help and advice relating to applications, enrolment, examinations and graduation at USC. Staff can also advise on scholarship applications and credit transfer.

Financial support www.usc.edu.au/financialsupport

You can access financial assistance in a variety of forms. Talk to staff in Student Administration about study costs and tuition fees, HECS-HELP, FEE-HELP, and scholarships, bursaries and prizes.

Health and wellbeing www.usc.edu.au/studenthealth

Health and wellbeing services help students in areas from finance to fitness. Student Services can assist with counselling, emergency loans, dispute mediation, nutrition and fitness, accommodation and tenancy, and the needs of the gay and lesbian community.

Indigenous support www.usc.edu.au/indigenous

The Buranga Centre offers support programs and facilities tailored specifically to Aboriginal, Torres Strait Islander and Australian South Sea Islander students. Indigenous staff provide culturally appropriate resources and academic support such as the Indigenous Alternative Entry Program, Indigenous Orientation Week, National Indigenous Cadetship and the Indigenous Tutorial Assistance Scheme.

International student support www.usc.edu.au/international

If you are an international student, USC International is your point of contact to access a range of services and advice on all aspects of studying in Australia. English language support is available.

IT services www.usc.edu.au/itsupport

Computer services can be accessed on campus or remotely. When on campus, use the 24-hour student computer laboratories, the Information Commons in the Library, or your own laptop using wireless access or wired network connections. You can also access a variety of study resources via the internet when off campus (refer to page 7). Contact the Student IT Help Desk for assistance.

Other services:

Accommodation: www.usc.edu.au/accommodation

Student Services manages an accommodation register, which lists rentals available to students. There are also several privately owned student accommodation options next to the University campus.

Child care: www.usc.edu.au/childcare

A child care centre is located on campus.* An external provider operates the centre. Several other providers are located a short distance from the University.

Library support: For an introduction to Library services and resources, tutorials are usually offered during Orientation and the first three weeks of semester.

Sport and fitness: Enhance your university experience. See USC Sport to join a fitness class, access sporting facilities, get involved in university sport, or participate in social sport (refer to page 6).

Print services: Copying and printing facilities are located across the campus.

Security and safety: USC's campus has security on site 24 hours a day, 7 days a week.

Study costs

Tuition fees

www.usc.edu.au/fees

When examining the cost of going to university, it is important to remember that you don't need to pay your tuition fees up front—if you are eligible, the Federal Government allows you to defer your fees until you graduate and earn a reasonable salary.

As a postgraduate student, how much your study costs and the loan assistance available to you depends on the type of degree you choose and your citizenship status. The majority of postgraduate programs are full fee-paying. Some priority programs, such as education, mental health nursing or psychology, may offer Commonwealth Supported Places*, meaning that the fees can be significantly lower.

Your tuition fees are based on the number and type of courses (subjects) you study throughout your degree. The fees can vary based on the faculty you are studying in, and the unit value given to your course.

Tuition fees for each postgraduate course are detailed on the website.*

To calculate your tuition fees, refer to the list of postgraduate coursework fees by course, locate the courses you would enrol in (search by course code), and add the course fees together to get an indicative total program fee (remember that the fees may change each year).

If you're still not sure, contact Student Administration for assistance.

As an example:

A full-time student enrolled in the Master of Communication would study 8 courses in one year to complete this program. In 2011, with a per course fee of \$1,800, the total program would cost around \$14,400.

* 2012 fee information will be available from October 2011. Check the USC website for the latest information and the full postgraduate coursework fees schedule. Commonwealth supported postgraduate programs are subject to review each year. The University reviews fees annually.

HECS-HELP and FEE-HELP loans

The Federal Government's Higher Education Loan Program (HELP) allows eligible students to defer their student contribution and repay it later through the taxation system. If, like most students, you choose to defer your contribution, there are two different student loans available:

HECS-HELP

Eligibility: Commonwealth-supported students (CSP)—Australian citizens or those with a permanent humanitarian visa.

FEE-HELP

Eligibility: Fee-paying students (Australian citizens or those with a permanent humanitarian visa) studying a postgraduate degree.

Did you know?

The average **age** of a USC student is **25** (43% are under 21 years; 33% are aged 21-30; and 24% are over 30 years).

Postgraduate students constitute more than **10%** of USC's growing student population. Almost **25%** of students come from **outside** the Sunshine Coast region. More than **600** students receive financial support annually through **scholarships and bursaries**.

To help cover the costs of postgraduate study, eligible fee-paying students (either Australian citizens or permanent humanitarian visa holders) can apply for a FEE-HELP loan. While students offered a CSP, are eligible to apply for HECS-HELP.

Much like a HECS-HELP loan, the FEE-HELP loan can cover all or part of your tuition costs, with repayments only starting when your income reaches a set threshold (in 2011, that amount was A\$44,912). FEE-HELP loans do not attract any interest, but are indexed against the CPI. FEE-HELP loans have a capped borrowing limit—from January 2011, students can borrow a maximum of A\$86,422 over their lifetime.

You have three options for meeting your tuition costs under FEE-HELP:

- One—pay up-front, in full; or

If you decide not to pay the full tuition fee upfront and you are eligible for FEE-HELP, you may:

- Two—pay some up-front and request a FEE-HELP loan to pay the remainder of the tuition fee; or
- Three—request a FEE-HELP loan for the full amount;

and defer any payments until your income exceeds the minimum repayment threshold.

You can make a voluntary repayment to the Tax Office at any time and for any amount. Voluntary repayments of A\$500 or more attract a 5 percent discount.

Voluntary payments are in addition to compulsory repayments. They are not refundable.

For more information about HECS-HELP, FEE-HELP or tuition fees, contact:

HECS-HELP/FEE-HELP Enquiry Line: 1800 020 108

DEEWR website: www.goingtouni.gov.au

USC Student Fees Officer: Tel 07 5430 2890; Email fees@usc.edu.au

Other expenses

Aside from your tuition fees, you will need to meet other course-related costs. While these vary depending on the program you are studying, you should allow around A\$120 per course for textbooks. Textbooks can often be purchased second-hand—once enrolled, you can visit the USC Portal to view a listing of available textbooks. You should also consider other costs like stationery, computer equipment and photocopying.

Are study expenses tax-deductible?

www.ato.gov.au/studyandclaim

Depending on your circumstances, if you work and study at the same time and your course relates directly to your employment, you may be eligible for a tax deduction for self-education expenses such as tuition fees, stationery and textbooks. For eligible fee-paying students, your current employment and the course you undertake must have sufficient connection for your self-education expenses to qualify as a work-related tax deduction. Taking out a FEE-HELP loan does not affect your ability to claim a tax deduction, however, you cannot claim for self-education expenses paid under HECS-HELP.

For more information, visit the Australian Taxation Office.

You may also wish to discuss your study plans with your employer. Many employers value professional development and some may be willing to contribute towards the cost of your education if it relates to your work. An employer reimbursing study expenses may be liable for Fringe Benefit Tax.

Scholarships and support

www.usc.edu.au/scholarships www.usc.edu.au/student-services

USC students have access to a variety of scholarships, bursaries and prizes, all designed to help pay tuition fees, purchase textbooks and equipment, pay for accommodation, and meet general living expenses.

Visit the website for a list of available scholarships and bursaries, eligibility requirements and application forms.

A range of other financial support services at USC can help you meet the costs associated with tertiary study:

- Student Services delivers welfare services, including advice about financial and tenancy issues, Centrelink payments and other loan schemes.
- If you are looking for a part-time job to help pay the bills, USC's careers and employment service can help. Career Connection provides assistance with job hunting, career guidance and work experience. Visit careerhub.usc.edu.au to search for jobs online or to contact Career Connection.
- Student Services offers interest-free loans of up to A\$500 to eligible students for purchasing textbooks and study-related materials. Emergency loans of up to A\$50 can help you to meet unexpected and urgent financial obligations.



Steps to study

1 Assess your options

On page 4, you will find information to help you decide between different types of postgraduate study and modes. Refine your selection based on your needs, aspirations, commitments, experience and interest areas.

Postgraduate study offers flexibility and opportunities that can be best explored with advice and assistance from academic staff. Don't be afraid to speak to University and relevant faculty staff—they are there to help.

2 Choose a program

Use the postgraduate degree directory (page 11) and the following program descriptions to help you make your final selection.

3 Check admission requirements

Postgraduate coursework program

Usual requirements are:

- an approved tertiary qualification from a recognised tertiary institution, or an equivalent qualification, and
- satisfaction of any program prerequisites or requirements as listed under each program description.

If you have considerable work experience but do not have a formal degree or qualification, you may still apply. The University may waive educational requirements if you have relevant experience and are likely to be successful at postgraduate study. For more information, contact the relevant faculty.

English language requirements for international applicants

www.usc.edu.au/international

Applicants require high-level academic English skills before commencing a postgraduate program at USC. All courses are taught in English, and all assessment items—including research theses and dissertations—must be written in English. If English is not your first language, you need to provide evidence that you meet USC's minimum English requirements. English language courses may assist in meeting this requirement. Contact USC International for more information.

4 Apply

Postgraduate coursework program

Australian and New Zealand citizens and Australian permanent residents apply by downloading a copy of the relevant application form from www.usc.edu.au/postgradapply or requesting a copy from Student Administration. Completed application forms must be returned to the return address stated on the form.

International students should read important information and download application forms from www.usc.edu.au/internationalapply

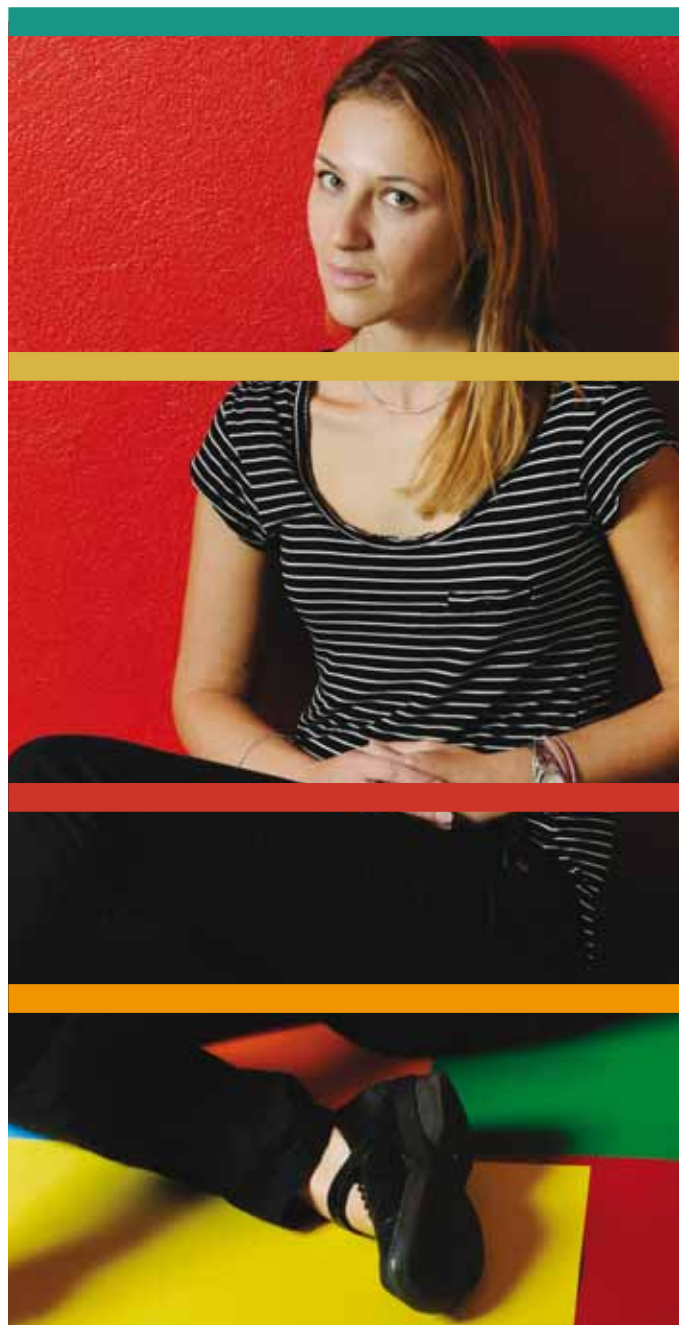
Graduate Diploma in Education

Students currently enrolled in, or having completed, their University of the Sunshine Coast degree programs in the last twelve months must lodge applications for admission to the Graduate Diploma in Education to USC Student Administration and not through QTAC. Contact Student Administration for more information.

All other Graduate Diploma in Education applicants must lodge their application through QTAC www.qtac.edu.au and complete a Graduate Diploma in Education Additional Information Form available at www.usc.edu.au/applicationforms. You must lodge this form and the supporting documentation directly with the Faculty of Science, Health and Education.

5 Accept your offer

Successful applicants will receive a letter of offer from USC. Read and follow the instructions contained in your letter carefully to accept your offer and commence study at USC.



Credit transfer

USC has flexible credit transfer arrangements with other institutions. To apply for credit for prior study, complete an Application for Credit Transfer form available at www.usc.edu.au/credit

Attach certified copies of transcripts from your previous study and detailed course outlines/descriptions of each course. Submit your application to USC Student Administration before the commencement of your first semester/session of study. International students should return their form and documentation to USC International when they make their application.

Postgraduate degree directory

| | Mode | Page |
|---|-----------------------|------|
| Graduate Certificate in Accounting | on campus | 12 |
| ✕ Graduate Certificate in Business Administration | on campus; online | 13 |
| Graduate Certificate in Business Research | on campus | 14 |
| ✕ Graduate Certificate in Management | on campus; online | 14 |
| Graduate Diploma in Accounting | on campus | 12 |
| ✕ Graduate Diploma in Business Administration | on campus; online | 13 |
| Executive Master of Business Administration | on campus (intensive) | 13 |
| ✕ Master of Business Administration | on campus; online | 13 |
| ✕ Master of International Business | on campus; online | 14 |
| ✕ Master of Professional Accounting | on campus | 12 |

BUSINESS AND INFORMATION TECHNOLOGY

| | Mode | Page |
|---|-----------|------|
| ✕ Graduate Certificate in Communication | on campus | 15 |
| ✕ Graduate Certificate in Creative Writing | on campus | 15 |
| Graduate Certificate in Creative Writing for Youth | on campus | 16 |
| Graduate Certificate in Digital Design (Electronic Media) | on campus | 16 |
| Graduate Certificate in Digital Design (Print and Imaging) | on campus | 16 |
| Graduate Certificate in Journalism | on campus | 17 |
| ✕ Graduate Certificate in Public Relations | on campus | 17 |
| ✕ Graduate Diploma in Communication | on campus | 15 |
| ✕ Graduate Diploma in Creative Writing | on campus | 15 |
| Graduate Diploma in Digital Design (Print and Electronic Media) | on campus | 16 |
| ✕ Graduate Diploma in Journalism | on campus | 17 |
| ✕ Graduate Diploma in Public Relations | on campus | 17 |
| ✕ Master of Communication | on campus | 15 |

COMMUNICATION AND DESIGN

| | Mode | Page |
|---|-----------------------|------|
| Graduate Certificate in Professional Learning | on campus | 18 |
| Graduate Certificate in Vocational Education and Training | on campus (intensive) | 19 |
| ✕ Graduate Diploma in Education | on campus | 18 |
| ✕ Master of Education | on campus | 18 |
| ✕ Master of TESOL Education | on campus | 19 |

EDUCATION

| | Mode | Page |
|---|---------------------------------|------|
| Graduate Certificate in Health Promotion | on campus (multi-modal); online | 20 |
| Graduate Certificate in Nursing (General Practice) | on campus (blended) | 20 |
| Postgraduate Certificate in Nursing (Advanced Practice) | on campus (blended) | 21 |
| Graduate Diploma in Health Promotion | on campus (multi-modal) | 20 |
| Master of Advanced Nursing Practice | on campus (blended) | 21 |
| Master of Advanced Nursing Practice (Emergency Care) | on campus (blended) | 21 |
| ✕ Master of Health Promotion | on campus (multi-modal) | 20 |
| ✕ Master of Mental Health Nursing | on campus (blended) | 21 |
| ✕ Master of Midwifery | on campus (blended) | 22 |
| ✕ Master of Psychology (Clinical) | on campus | 22 |

HEALTH

| | Mode | Page |
|---|-------------------------------|------|
| Graduate Certificate in Arts | on campus | 24 |
| Graduate Certificate in Futures Studies | on campus; online | 25 |
| ✕ Graduate Diploma in Arts | on campus | 24 |
| Master of Counselling | on campus | 24 |
| Master of Counselling Practice | on campus | 25 |
| Master of Regional and Urban Planning* | on campus (intensive); online | 26 |
| ✕ Master of Social Work (Qualifying) | on campus | 26 |

HUMANITIES AND SOCIAL SCIENCES

| | Mode | Page |
|---|----------------------------------|------|
| ✕ Graduate Certificate in Climate Change Adaptation | on campus; on campus (intensive) | 27 |
| Graduate Certificate in Sustainability | on campus; online | 27 |
| ✕ Master of Climate Change Adaptation | on campus (intensive) | 27 |

SCIENCE AND SUSTAINABILITY

✕ Available to international students on a Student Visa. **International students, please note:** Programs without a CRICOS provider number are not available to international students on a Student Visa. For CRICOS registered programs, only the on-campus full-time study option is available to international students on a Student Visa.

* Subject to approval.

Business and Information Technology

ACCOUNTING

GRADUATE CERTIFICATE IN...

GRADUATE DIPLOMA IN...

- Pathway into the accounting profession
- Gain entry to CPA Australia and the Institute of Chartered Accountants in Australia
- Flexible course offerings help you balance your study and work commitments

Graduate Certificate in Accounting

Full-time: not available full-time
 Part-time: 1–3 years (maximum)
 Study mode: on campus
 Total courses: 4
 Commence: Semester 1
 CRICOS code: Not available to international students on a Student Visa
 Comprehensive program information and admission requirements:
www.usc.edu.au/BU571

Graduate Diploma in Accounting

Full-time: not available full-time
 Part-time: 2–4 years (maximum)
 Study mode: on campus
 Total courses: 8
 Commence: Semester 1
 CRICOS code: Not available to international students on a Student Visa
 Comprehensive program information and admission requirements:
www.usc.edu.au/BU671

Upgrade your skills and gain professional accounting qualifications.

If you are a business graduate with an undergraduate degree in an area other than accounting, the Graduate Certificate or Graduate Diploma in Accounting offers a pathway into the accounting profession and provides knowledge and skills to enhance your career prospects.

The Graduate Certificate consists of four courses and articulates into the eight-course Graduate Diploma. Courses in the Graduate Certificate cover accounting, business finance and business law. In the

Graduate Diploma, you study accounting, auditing and accounting issues, business finance, and business and taxation law.

If you enrol in the Graduate Diploma, you may choose to exit after completing the first four courses with the Graduate Certificate and achieve a recognised qualification. Subject to certain time conditions, you can return to upgrade your qualification later.

PROFESSIONAL RECOGNITION

Professional accounting bodies—such as CPA Australia and the Institute of Chartered Accountants in Australia—generally accept four specific business undergraduate courses plus the eight courses of the Graduate Diploma for associate membership.

PROFESSIONAL ACCOUNTING

MASTER OF...

- Build on your undergraduate study to pursue an accounting career
- Become an associate member of CPA Australia, the Institute of Chartered Accountants in Australia, and the National Institute of Accountants
- Apply for scholarships to help meet your study expenses

Master of Professional Accounting

Full-time: 2 years (minimum)
 Part-time: 6 years (maximum)
 Study mode: on campus
 Total courses: 12
 Commence: Semester 1
 CRICOS code: 059557J
 Comprehensive program information and admission requirements:
www.usc.edu.au/BU771



The MPA introduces you to business with a focus on accounting.

The program enables you to gain recognition by the two peak professional accounting bodies in Australia—CPA Australia and the Institute of Chartered Accountants in Australia.

You develop knowledge of concepts fundamental to successful business operation including economics, business law, research methods, and information and communications technology (ICT). You also gain

specialised knowledge of accounting topics such as auditing, corporate and management accounting, taxation law and business finance.

Through a range of in-depth courses, you acquire a deeper understanding of the function of accounting in today's complex business environment. You discover the basic principles of taxation law, and the nature, scope and operation of different business structures.

You learn a range of analytic tools for costing, decision-making, planning and control. You examine contemporary accounting and disclosure issues from inception and acquisition, to trading and termination

of a company. You gain a firm foundation in ICT, and explore the specific application of ICTs to accounting.

Delivery includes face-to-face lectures, tutorial participation and assessment.

PROFESSIONAL RECOGNITION

Graduates of the MPA program will meet the educational requirements for admission as an associate member of CPA Australia, the Institute of Chartered Accountants in Australia, and the National Institute of Accountants. To gain full membership, you must complete the requirements of the chosen professional body's qualification program.

BUSINESS ADMINISTRATION

GRADUATE CERTIFICATE IN...

GRADUATE DIPLOMA IN...

MASTER OF...

- MBA—the international standard for graduate business qualifications
- Innovative and flexible approaches to learning
- Enjoy the freedom and flexibility of studying online



Graduate Certificate in Business Administration

Full-time: 4 months (minimum)
Part-time: 2 years (maximum)
Study mode: on campus (Sippy Downs or Noosa); online
Total courses: 8
Commence: Session 2, Session 5 or Session 9
CRICOS code: 067674D

Comprehensive program information and admission requirements:
www.usc.edu.au/BU510

Graduate Diploma in Business Administration

Full-time: 8 months (minimum)
Part-time: 4 years (maximum)
Study mode: on campus; online
Total courses: 16
Commence: Session 2, Session 5 or Session 9
CRICOS code: 067675C

Comprehensive program information and admission requirements:
www.usc.edu.au/BU610

Master of Business Administration

Full-time: 1 year (minimum)
Part-time: 6 years (maximum)
Study mode: on campus; online
Total courses: 24
Commence: Session 2, Session 5 or Session 9
CRICOS code: 066777E

Comprehensive program information and admission requirements:
www.usc.edu.au/BU710

Broaden your managerial skills to prepare for senior management roles.

In today's business world, the demands of management require you to have an increasing range of skills in all facets of business. Graduate training in management and business administration can complement and enhance the skills you have gained in the workplace, or add value to existing qualifications—fast tracking your career ambitions.

USC's business administration programs offer you innovative and flexible approaches to learning, including the opportunity to study online. Courses explore current business issues and offer you network-building opportunities. You learn to integrate knowledge and skills across functions and disciplines, and focus on the application of theory and execution of practice.

The 8-course Graduate Certificate in Business Administration introduces you to fundamental areas of business administration. Courses cover the key functional areas of an organisation and provide you with knowledge and skills in the key discipline areas. For the Graduate Certificate, you can elect to complete courses at the Sippy Downs campus or at USC's Noosa Centre.

The 16-course Graduate Diploma builds on the Graduate Certificate and articulates into the Master of Business Administration. In the Graduate Diploma, you extend the skill-focused study and practical work to develop your professional understanding and problem-solving abilities. Depending on your interests, you can choose to study courses in decision-making, economics, marketing, management, law, ethics or informatics.

The suite culminates in the 24-course MBA, which is now the international standard for graduate business qualifications. As an MBA student, you develop managerial skills in critical thinking and research and analysis through individual and team-based work. You complete 16 core subjects covering the fundamental areas of business administration and choose eight elective courses, which allow you to focus on specific interest areas.

For added flexibility, if you enrol in the Graduate Diploma you may choose to exit after completing the first eight courses with the Graduate Certificate and achieve a recognised qualification. Similarly, if you enrol in the masters program, you may choose to exit after completing the first 16 courses and gain the Graduate Diploma. Subject to certain time conditions, you can return to upgrade your qualification later.

BUSINESS ADMINISTRATION

EXECUTIVE MASTER OF...

- Intensive delivery meets the needs of the busy executive
- Enhance your qualifications to prepare for senior management roles
- Seize the opportunity to network with peers and industry leaders

Executive Master of Business Administration

Duration: 2 years
Study mode: on campus (intensive)
Total courses: 24
Commence: Starts end of February in the first year of study and continues each month until the end of November. After a short break at the end of the year, the EMBA recommences in early January. There is only one intake each year.

CRICOS code: Not available to international students on a Student Visa
Comprehensive program information and admission requirements:
www.usc.edu.au/BU791

As a busy executive, you can upgrade your qualifications via intensive weekend classes.

The Executive Master of Business Administration (EMBA) allows you to advance your knowledge in a unique format where students progress through the program with the same group of peers. The program focuses on managers who are capable of intensive and focused study, but are time-poor. Only EMBA students with significant work experience attend the classes, with delivery through intensive weekend workshops once a month for two years.

The EMBA is a professionally oriented program of study that develops your understanding and problem-solving ability in business and management issues relevant to both public and private sector organisations. You have the opportunity to enhance your strategic thinking, leadership skills and competencies, in areas such as marketing, accounting, financial management and economics. The EMBA integrates skills across key business areas, and involves reflection and learning from real examples of business strategy and its implementation.

The EMBA gives you an opportunity to network with peers and industry leaders, and enables you to develop business and industry contacts. Working

with a cohort lays the foundations for a powerful learning environment, and the program uses computer-based simulations and problem-solving activities to challenge skills, attitudes and beliefs. Teaching staff are from both USC and external organisations.

The EMBA is delivered on campus at USC on one weekend each month across 22 months. For the assigned weekends, you will need to be available to attend classes. The EMBA program commences at the end of February for the first year of study, and continues each month until the end of November. After a short break at the end of the year, the program will re-commence in the second week of January. Each weekend of delivery combines two or three courses so that delivery of a single course is not concentrated in one weekend. In addition, exams are conducted progressively throughout the scheduled weekends, not at a separate time. Due to this intensive delivery mode, you are able to gain a real sense of achievement and progress. To be considered for admission, you must have at least five years senior managerial work experience and attend an interview. For more information, visit www.usc.edu.au/BU791

BUSINESS RESEARCH

GRADUATE CERTIFICATE IN...

- Develop advanced research skills
- Earn admission to a PhD or Master by Research
- Gain a postgraduate qualification in as little as four months

Graduate Certificate in Business Research

Full-time: 4 months

Part-time: 2 years (maximum)

Total courses: 4

Study mode: on campus

Commence: Semester 1

CRICOS code: Not available to international students on a Student Visa

Comprehensive program information and admission requirements:

www.usc.edu.au/BU508

Take the next step towards a business research degree.

If you are a Masters by coursework student or graduate, the Graduate Certificate in Business Research offers a clear pathway to gaining entry into a research higher degree program.

The Graduate Certificate consists of four courses, covering research concepts, design and methodology.

The program provides an appropriate qualification and research training for students wishing to

pursue a higher degree by research but do not meet the usual entry requirements of a research-based Masters or Honours qualification.

The program ensures that students undertaking higher studies will have developed the necessary research skills.

The Graduate Certificate also serves as a gauge for both students and the University to assess the candidate's potential suitability for higher research degree studies, and gives both student and potential supervisors the opportunity to more fully develop proposed research topics.



INTERNATIONAL BUSINESS

MASTER OF...

- Examine how firms operate and succeed in international business
- Explore the cultural dimensions of international management
- Learn to manage businesses strategically in a changing global environment

Learn to understand the new realities of international business.

The Master of International Business is a contemporary flagship degree of the Faculty of Business. It equips you with the international business skills you need in managing a global environment of continuous change. The program aims to exploit existing opportunities in the global environment and to explore new and demanding business challenges.

As a graduate, you can expect to be in demand for positions in export/import firms, foreign affairs and government departments, human resource management such as repatriation and training, international liaison positions, logistics management, marketing and management consultancies, and purchasing and trade positions. The degree is ideal for those aiming to work in global corporations and offers membership to selected institutions such as the Australian Institute of Management.

Master of International Business

Full-time: 8 months

Part-time: 16 months

Total courses: 8

Study mode: on campus, online

Commence: Session 1, Session 4 or Session 8

CRICOS code: 069960D

Comprehensive program information and admission requirements:

www.usc.edu.au/BU782

PROFESSIONAL RECOGNITION

As a graduate, you may be eligible for membership of the Australian Institute of Management. All students may also apply for membership of Australian and New Zealand Academy of Management, the Academy of International Business, and the Australian and New Zealand International Business Academy.

MANAGEMENT

GRADUATE CERTIFICATE IN...

- Gain a postgraduate qualification in as little as four months
- Entry pathway to the Master of Business Administration for business and non-business graduates
- Study the four key areas of Business: Accounting, Economics, Managing Organisations, and Marketing

Make the decision to become an effective manager now.

The 4-course Graduate Certificate in Management is an introduction to graduate-level study and enables you to build your competency in four main areas of management. Learn to use accounting, economics and marketing data for informed decision-making and examine ways to manage organisational behaviour.

The Graduate Certificate is ideal if your undergraduate degree is not in business, commerce, management or similar, and you seek an introduction to business and management at the graduate level. It is also an entry pathway if you wish to complete a Master of Business Administration but do not hold a bachelors degree in business or equivalent. The Graduate Certificate in Management can also be used to gain entry into further postgraduate study.

Graduate Certificate in Management

Full-time: 4 months

Part-time: 2 years (maximum)

Study mode: on campus; online

Total courses: 4

Commence: Session 1; Session 8 (part-time only)

CRICOS code: 065611B

Comprehensive program information and admission requirements:

www.usc.edu.au/BU533

Communication and Design

COMMUNICATION

GRADUATE CERTIFICATE IN...

GRADUATE DIPLOMA IN...

MASTER OF...

- Enhance your writing and communication skills
- Discover the nuances of journalistic reporting
- Create a portfolio of published works

Graduate Certificate in Communication

Full-time: 6 months (minimum)
Part-time: 2 years (maximum)
Study mode: on campus
Total courses: 4
Commence: Semester 1 or Semester 2
CRICOS code: 058562J

Comprehensive program information and admission requirements:
www.usc.edu.au/AR541

Graduate Diploma in Communication

Full-time: 1 year (minimum)
Part-time: 4 years (maximum)
Study mode: on campus
Total courses: 8
Commence: Semester 1 or Semester 2
CRICOS code: 058564G

Comprehensive program information and admission requirements:
www.usc.edu.au/AR641

Develop your writing proficiency and improve your job prospects.

The Graduate Certificate or Graduate Diploma in Communication offers you an opportunity to develop skills in contemporary communication. The programs will be attractive to professionals in the corporate or government sectors looking to upgrade their qualifications and expertise in a short time, and gain a qualification that has relevance, currency and credibility. The ability to write and communicate well is becoming increasingly important. Employers are looking for people with the ability to write and communicate in an effective, efficient and lucid fashion. These programs impart knowledge and skills for both professional and business writing, and written communication in general.

The coursework-based Master of Communication is for those who want to develop or enrich their expertise in the rapidly expanding field of professional communication. It is ideal if you have studied in another discipline and wish to make a

transition to journalism, professional writing, editing or public relations. Many media organisations place a premium on recruiting staff with degrees in fields such as science, law and business that also have postgraduate qualifications in relevant fields of communication.

You have the opportunity to specialise in the broad area of Communication Studies or the specific fields of Journalism, Public Relations or Creative Writing. Overall, you undertake the equivalent of 12 courses. After completing eight courses, five of which are electives, you complete a research project in which you choose to either research for and write a thesis of 16,000 to 20,000 words, or complete an industry-based research project.

The research component involves individualised research relevant to your key area/s of interest as a professional communicator. It is equivalent in value to four courses.

Master of Communication

Full-time: 1–1.5 years (maximum)
Part-time: 2–3 years (maximum)
Study mode: on campus
Total courses: 12 (equivalent)
Commence: Semester 1 or Semester 2
CRICOS code: 057539E

Comprehensive program information and admission requirements:
www.usc.edu.au/AR841

You attend lectures and tutorials with undergraduate students but learning and assessment tasks are commensurate with a postgraduate standing. Because of this standing, you will be exempt from many course prerequisites although you must complete compulsory courses in your selected areas of specialisation. Research components of the program must be approved by the Program Leader, and are based on the availability of supervisory staff with relevant expertise.

CREATIVE WRITING

GRADUATE CERTIFICATE IN...

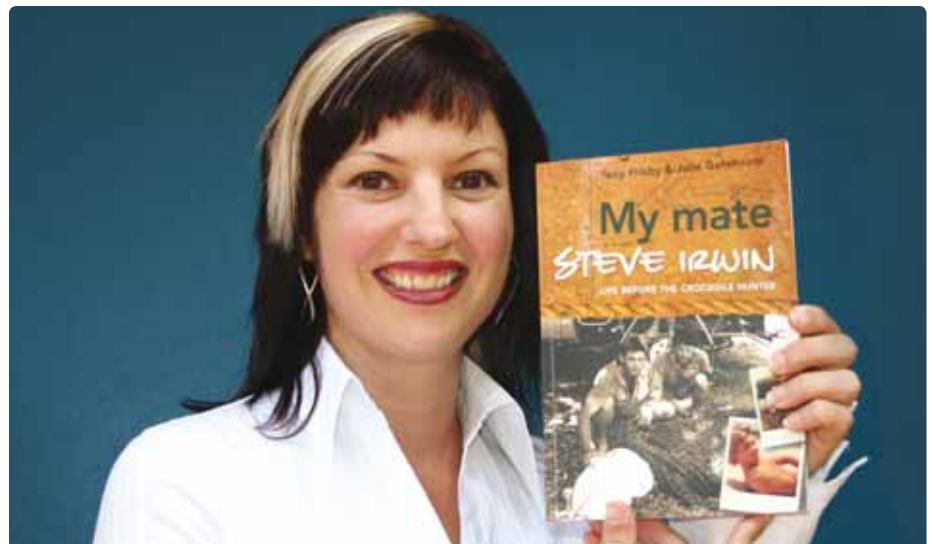
GRADUATE DIPLOMA IN...

- Enhance your creative writing and communication skills
- Discuss your story ideas with an established creative writer
- Understand the link between narrative theory and narrative practice

Write and communicate in a strong, creative and clear fashion.

In the 4-course Graduate Certificate in Creative Writing, you have an opportunity to develop your skills and conceptual understandings in contemporary creative and professional writing. This program imparts knowledge and develops skills for literary writing and for communication generally, including drafting, revising and editing techniques. You learn to identify and evaluate an audience to determine the appropriate style of written communication and delivery, and examine trade novel conventions and the reasons for economic success in the global market. Discuss your ideas and stories with an established creative writer in class.

The Graduate Diploma in Creative Writing allows you to enhance your creative and professional writing skills, especially those relevant to careers in the communications industry or other sectors requiring well-developed communications skills. It builds on the Graduate Certificate and you can apply units completed towards the higher award.



Graduate Certificate in Creative Writing

Full-time: 6 months (minimum)
Part-time: 2 years (maximum)
Study mode: on campus
Total courses: 4
Commence: Semester 1 or Semester 2
CRICOS code: 058885A

Comprehensive program information and admission requirements:
www.usc.edu.au/AR514

You gain knowledge and skills in creative writing, as well as competencies enabling you to work effectively across a range of jobs requiring strong writing skills. If you are pursuing the diploma

Graduate Diploma in Creative Writing

Full-time: 1 year (minimum)
Part-time: 4 years (maximum)
Study mode: on campus
Total courses: 8
Commence: Semester 1 or Semester 2
CRICOS code: 058883C

Comprehensive program information and admission requirements:
www.usc.edu.au/AR614

for self-development, you will have a greater understanding of the creative writing genre allowing you to pursue personal writing projects and other opportunities.

CREATIVE WRITING FOR YOUTH

GRADUATE CERTIFICATE IN...

- Specialise in writing for children and young adults
- Appreciate the aesthetics of the illustrated book
- Learn to read nuances embedded in an illustrated text

Enhance your professional writing skills to specialise in writing for a youth audience.

The Graduate Certificate in Creative Writing for Youth gives you the opportunity to specialise in writing for children and young adults in the genre of the illustrated book, the short story and the novel.

The first course introduces you to the basic skills required to be a creative writer. Focusing on the short story, you examine narrative elements including character motivation, plot, theme and setting, as well as basic editing skills and approaches to writing for particular audiences. You explore creative writing for children and young adults, which can draw on many genres. You study a range of novels to develop an understanding of the thematic potential within this field, and develop creative writing techniques applicable to a youth audience.

You focus on the specific writing style needed to make the illustrative genre successful. While the

Graduate Certificate in Creative Writing for Youth

Full-time: 6 months (minimum)
Part-time: 2 years (maximum)
Study mode: on campus
Total courses: 4
Commence: Semester 1 or Semester 2
CRICOS code: Not available to international students on a Student Visa
Comprehensive program information and admission requirements: www.usc.edu.au/AR522

children's illustrated book has been available for many years, the graphic novel for adults is a relatively new genre and attracts a wide readership. This course does not teach illustration, but examines the print text (narrative) pertinent to this illustrated genre. Course delivery is via lecture, workshop or tutorial.

DIGITAL DESIGN

GRADUATE CERTIFICATE IN...

GRADUATE DIPLOMA IN...

- Design workable solutions to new media communication challenges
- Create animation, video, sound and interactive content for web-based applications
- Learn to support advanced interactivity with programming and scripting

Acquire new knowledge or upgrade existing skills to broaden your career options.

USC's digital design programs are ideal for those who have completed an undergraduate degree or its equivalent in a discipline other than digital design and multimedia. They offer interactive design studies equivalent to those available within the higher levels of a bachelor degree.

The Graduate Certificate in Digital Design (Electronic Media) is a qualification that is industry relevant and provides practical skills. Learn to design and develop web and screen-based media solutions for a range of professional and commercial applications. Courses introduce a range of design and software skills related to web design, digital video and sound production, vector-based animation and interactive design. Using traditional and digital design techniques to create effective solutions to new media communication challenges, you undertake projects addressing information architecture, navigation design and content production using industry-standard software. Projects include design for online learning, visual communication, entertainment, sales and advertising.

In the Graduate Certificate in Digital Design (Print and Imaging) you develop or enhance your skills in the print-related digital media industries. Learn to use a range of software for digital graphic design and desktop publishing, producing work and promotional materials for your personal portfolio and a gallery exhibition at the University. Develop your practical skills working on industry-relevant projects, including concept development, marketing strategies, corporate design, logo development, packaging, typography, media placement and press production. This is an excellent way to explore the range of creative design possibilities made available through digital imaging applications.

Graduate Certificate in Digital Design (Electronic Media)

Full-time: not available full-time
Part-time: 2–4 years (maximum)
Study mode: on campus
Total courses: 4
Commence: Semester 1
CRICOS code: Not available to international students on a Student Visa
Comprehensive program information and admission requirements: www.usc.edu.au/AR512

Graduate Certificate in Digital Design (Print and Imaging)

Full-time: not available full-time
Part-time: 2–4 years (maximum)
Study mode: on campus
Total courses: 4
Commence: Semester 1
CRICOS code: Not available to international students on a Student Visa
Comprehensive program information and admission requirements: www.usc.edu.au/AR511



Graduate Diploma in Digital Design (Print and Electronic Media)

Full-time: not available full-time
Part-time: 2–4 years (maximum)
Study mode: on campus
Total courses: 8
Commence: Semester 1
CRICOS code: Not available to international students on a Student Visa
Comprehensive program information and admission requirements: www.usc.edu.au/AR611

The Graduate Diploma in Digital Design (Print and Electronic Media) comprises both of the above graduate certificates undertaken either sequentially or simultaneously. This pathway gives you the opportunity to broaden your studies to encompass both print and electronic media. You can apply units

completed under either graduate certificate toward the higher award if you decide to upgrade your qualification. In studying for the Graduate Diploma, you develop a broader range of practical and creative skills relevant to the creative and technical demands of today's design profession.

JOURNALISM

GRADUATE CERTIFICATE IN...

GRADUATE DIPLOMA IN...

- Enhance your writing and communication skills
- Discover the nuances of journalistic reporting
- Create a portfolio of published works

Develop your writing proficiency and improve your job prospects.

The Graduate Certificate and Graduate Diploma in Journalism offer an opportunity to develop your skills in contemporary journalism, and gain a qualification that has relevance, currency and credibility. The programs are ideal for professionals in corporate or government sectors who wish to upgrade their qualifications and expertise in a short time.

In today's job market, the ability to write and communicate well has become increasingly important. USC's journalism programs impart both knowledge and skills relevant for professional and business writing, and written communication in general. You develop competencies in research, writing, editing, and production; and examine the general communications required of journalists and the different media—print, broadcast and the internet.

Courses in the Graduate Certificate provide you with a solid introduction to journalism. Learn editing techniques across different media, participate in the online publishing process, build a portfolio of published articles, and learn basic photojournalism skills. You also examine the foundations of journalism, including its history and social and political relevance.

The Graduate Diploma in Journalism builds on the 4-course Graduate Certificate and you can apply the units completed to the higher award. Using your electives, you can choose to extend your expertise into areas such as computer-assisted reporting, online journalism, politics and the media, feature writing or even research. To further your studies, the



Graduate Certificate in Journalism

Full-time: 6 months (minimum)
Part-time: 2 years (maximum)
Study mode: on campus
Total courses: 4
Commence: Semester 1 or Semester 2
CRICOS code: Not available to international students on a Student Visa
Comprehensive program information and admission requirements:
www.usc.edu.au/AR543

Graduate Diploma in Journalism

Full-time: 1 year (minimum)
Part-time: 4 years (maximum)
Study mode: on campus
Total courses: 8
Commence: Semester 1 or Semester 2
CRICOS code: 058566E
Comprehensive program information and admission requirements:
www.usc.edu.au/AR643

8-course Graduate Diploma articulates into the Master of Communication (refer to page 15). If you complete the Graduate Diploma in Journalism, you may apply for up to 8 courses (96 units) credit towards the coursework component of the Master of Communication.

PUBLIC RELATIONS

GRADUATE CERTIFICATE IN...

GRADUATE DIPLOMA IN...

- Learn to create strategic communication campaigns
- Find out how to succeed in the competitive field of public relations
- Develop essential writing, tactical and analytical skills

Build your skills in contemporary public relations.

Public relations specialists assist business, government and non-profit organisations to develop and maintain mutually beneficial relationships with clients, consumers, media, financial donors, employees and other stakeholders. These programs provide the theoretical understanding and practical skills to succeed in this competitive field. They are ideal for those who hold an undergraduate degree or its equivalent in an area different from public relations.

Interpersonal skills involving negotiation, and the ability to gain cooperation, are an essential foundation for advanced technical and strategic

Graduate Certificate in Public Relations

Full-time: 6 months
Part-time: 2 years (maximum)
Study mode: on campus
Total courses: 4
Commence: Semester 1 or Semester 2
CRICOS code: 065371B
Comprehensive program information and admission requirements:
www.usc.edu.au/AR513

skills in public relations. Complete the 4-course Graduate Certificate to improve your written and oral communication skills, learn to design and manage large-scale events, and gain an understanding of the media industries. It offers an attractive opportunity for you to gain a qualification that is relevant, current and credible. To continue your studies, the Graduate Certificate articulates into the 8-course Graduate Diploma and you can apply the units completed to the higher award.

The Graduate Diploma in Public Relations is ideal for professionals in corporate or government

Graduate Diploma in Public Relations

Full-time: 1 year (minimum)
Part-time: 4 years (maximum)
Study mode: on campus
Total courses: 8
Commence: Semester 1 or Semester 2
CRICOS code: 058893A
Comprehensive program information and admission requirements:
www.usc.edu.au/AR613

sectors looking to upgrade their qualifications and expertise in a short time and it is currently under consideration by the Public Relations Institute of Australia (PRIA) for accreditation. You gain hands-on workplace experience through two work integrated learning units—a major event project and an internship. In the Graduate Diploma, you can use your electives to specialise in an area of interest. Select courses in internal communications, crisis and issues management, or advertising; or undertake a research project on a particular aspect of public relations that interests you.

Education

EDUCATION

GRADUATE DIPLOMA IN...

- Return to school as a registered teacher
- Teach in a secondary, primary or preparatory classroom
- Link theory and practice with professional experience in schools

Graduate Diploma in Education

QTAC code: 017081 Sippy Downs
 OP/Rank for 2010 entry: GPA requirement
 Full-time: 1 year
 Part-time: 2 years
 Study mode: on campus
 Total courses: 10
 Commence: Semester 1 or Semester 2
 CRICOS code: 058884B

Comprehensive program information and admission requirements:
www.usc.edu.au/ED601

Achieve professional qualifications to apply for teacher registration.

In this program you gain the professional knowledge and skills to teach in early (Years P-3), primary (Years P-7) or secondary (Years 7-12) classrooms. The program includes education studies, curriculum studies and 75 days of professional experience completed in schools or learning communities.

GRADUATE DIPLOMA IN EDUCATION SECONDARY (YEARS 7-12)

To become a secondary teacher, you will have discipline knowledge drawn from your undergraduate degree in two teaching areas taught in Queensland schools. Your study will focus on secondary curriculum and teaching methods in these two teaching areas.

GRADUATE DIPLOMA IN EDUCATION PRIMARY (PREPARATORY-YEAR 7)

In the primary pathway, your focus of study is the primary curriculum. Your undergraduate degree must have sufficient breadth to enable you to confidently address the range of learning areas expected in most primary schooling contexts, including studies in the arts, social science, English, maths, science, health and physical education, technology and languages.

GRADUATE DIPLOMA IN EDUCATION PREPARATORY TO YEAR THREE

In the preparatory to year three pathway, your focus of study is the early years' primary curriculum. Your undergraduate degree must have sufficient breadth to enable you to confidently address the range of learning areas expected in most primary schooling contexts, including studies in the arts, social science, English, maths, science, health and physical education, technology and languages.



Requirements for placements

The Commission for Children and Young People Act (2000 and 2005) applies to all preservice teachers who will be working with children/students under the age of 18 in Queensland settings as a component of their program of pre-service education. The Commission issues Blue Cards once it has carried out the Working with Children Check to see if a person is eligible. A positive notice and a Blue Card will be issued to those deemed eligible.

To avoid processing delays, you are encouraged to apply for a Blue Card as soon as you have accepted your offer. Blue Cards are free-of-charge for Education students when you apply through USC's Professional Workplace Learning office (Level 2, C Building).

Note: If you do not possess a current Blue Card, you will be unable to complete the professional experience component of your program and you will be unable to meet graduation requirements.

For more information on Blue Cards, and how to apply, visit www.ccypeg.qld.gov.au/bluecard

PROFESSIONAL LEARNING

GRADUATE CERTIFICATE IN...

- Engage with a collaborative learning community
- Generate leadership and change in your professional field
- Continue your professional development in the Master of Education

Learn to engage with curriculum development.

The Graduate Certificate in Professional Learning offers practising educators, those seeking employment, and educators returning to the workforce, a series of learning opportunities to engage in a critical orientation to professional learning. It brings educators together in a collaborative learning community to enhance their leadership and engagement in curriculum development, evaluation, teaching, learning and assessment. To further your studies, the Graduate Certificate articulates into the Master of Education, and you may apply the units completed to the higher award.

Graduate Certificate in Professional Learning

Full-time: not available full-time
 Part-time: 1-2 years (maximum)
 Study mode: on campus (blended)
 Total courses: 4
 Commence: Semester 1 or Semester 2
 CRICOS code: Not available to international students on a Student Visa
 Comprehensive program information and admission requirements:
www.usc.edu.au/ED501

EDUCATION

MASTER OF...

- Choose a research or coursework pathway to support your engagement in higher education
- The coursework option provides opportunities to engage with theory and link it directly to your educational practice
- The research option offers access to research training and an opportunity to engage in the development of a guided research project

Enhance your educational practice.

The Master of Education offers you the opportunity to develop advanced knowledge and understanding in education, research skills, and a strong foundation for furthering your career as an educational professional.

The program is aimed at practicing professionals working as educators in primary or secondary schools, early childhood, higher education and adult and vocational education. You can choose to follow either a coursework option for professional development or undertake a research project.

The coursework option provides a range of courses that will provide opportunities for you to engage with theory and link it directly to practice in your education context.

Master of Education

Full-time: 1 year
 Part-time: 2 years
 Study mode: on campus
 Total courses: 8
 Commence: Semester 1 or Semester 2
 CRICOS code: 073276A
 Comprehensive program information and admission requirements:
www.usc.edu.au/ED704

TESOL EDUCATION

MASTER OF...

- Enhance your professional practice and improve your career opportunities
- Benefit from growing market demands for English teaching skills
- Note: This program does not accredit graduates for teacher registration in Queensland

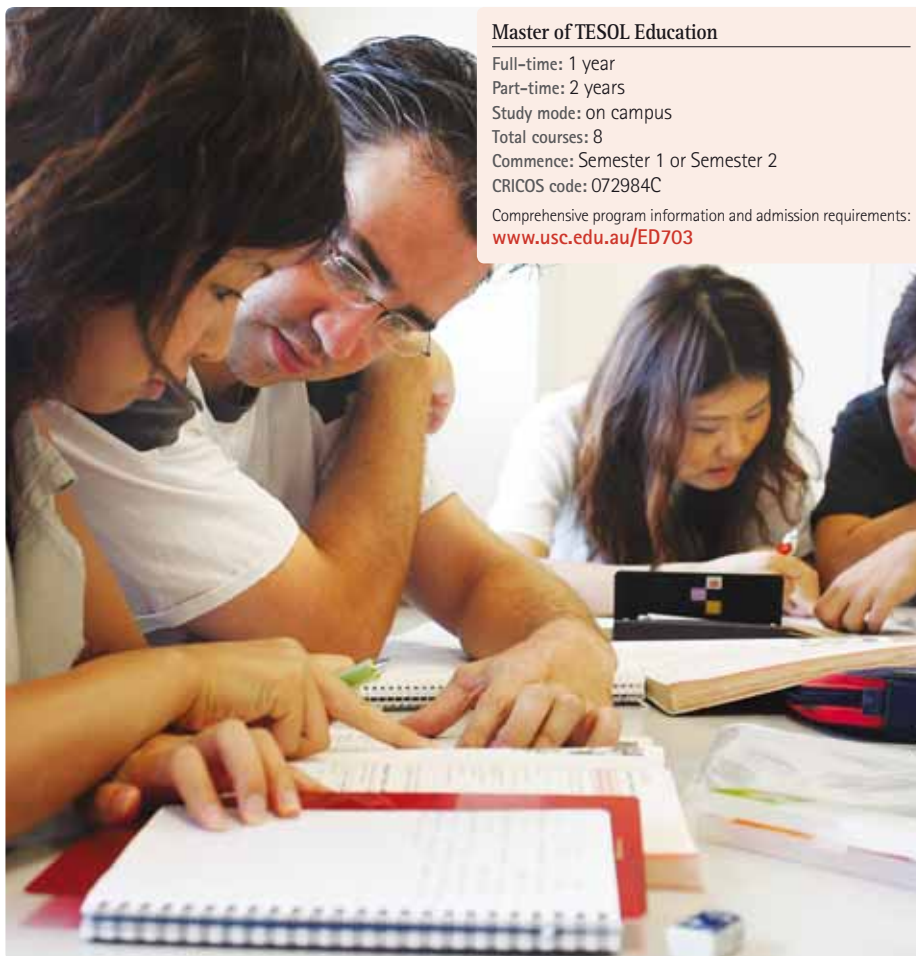
Broaden your prospects in teaching English as a second language.

The Master of TESOL Education is a professional development program, particularly for teachers of English as a Second Language (ESL). It is also designed to cater for non-native speaking teachers of English.

The program provides a thorough grounding in the theory and practice of Teaching English to Speakers of Other Languages (TESOL). You are encouraged to relate your own teaching experience and situation to your coursework, and the curriculum seeks to develop and extend the central skills for successful teaching and learning of English as a second or foreign language.

You are introduced to major aspects of second language acquisition theories, and examine different factors that influence the successful learning of another language. You deepen your understanding of the structure and the use of the English language, and learn how to incorporate communicative teaching methodologies, intercultural language learning principles and interlanguage phonology into your teaching practice.

Courses feature small group, face-to-face teaching that develops your abilities to exercise critical thinking, present information and arguments effectively, and use public presentation skills. The personal interaction skills you develop are essential in language teaching. You are assessed through a combination of assignments, peer-teaching activities and project work.



Master of TESOL Education

Full-time: 1 year
Part-time: 2 years
Study mode: on campus
Total courses: 8
Commence: Semester 1 or Semester 2
CRICOS code: 072984C

Comprehensive program information and admission requirements:
www.usc.edu.au/ED703

A student entering the masters program will be required to hold a 4-year degree (or equivalent) in Education, Languages or Linguistics, from a recognised university and relevant teaching experience. Applicants are required to have a minimum of 300 hours of communicative language teaching experience witnessed by an authorised

representative of a recognised English language teaching institute (eg Director of Studies).

Entry by non-graduates who have extensive relevant industry experience may be considered on a case-by-case basis by the Dean or Associate Professor in Education, Faculty of Science, Health and Education.

VOCATIONAL EDUCATION AND TRAINING

GRADUATE CERTIFICATE IN...

- Upgrade your qualifications and increase your employment flexibility
- Help meet the growing demand for VET-accredited trainers in schools, TAFE or RTOs
- Flexible learning approach caters for a diverse range of training needs

Graduate Certificate in Vocational Education and Training

Full-time: not available full-time

Part-time: 1–2 years

Study mode: on campus (intensive)

Total courses: 4

Commence: Session 11 (Summer)

CRICOS code: Not available to international students on a Student Visa

Comprehensive program information and admission requirements:
www.usc.edu.au/ED504

Expand your skills and become a VET-accredited trainer.

This program creates leaders in VET practice who can design and deliver quality vocational education and training to retain learners, build workplace learning success, and establish pathways to further education, training and employment.

Changing work roles of VET practitioners requires shifting mindsets, new models and workforce renewal. Vocational education and training is immersed in an evolving environment in which system-wide radical reforms aim to produce a more industry-focused and responsive sector. This challenges the nature of vocational learning and the way in which it is delivered to a market with new and changing expectations.

Many teachers now facilitate learning in a range of blended delivery modes—"they are learning managers requiring effective communication skills, relevant and up-to-date content, and the knowledge and skills to deliver and assess in a wide range of contexts" (The Vocational Education and Training Workforce – new roles and ways of working 2004:2).

Build your capacity to deliver a learner-centred, industry-focused product that is responsive to the challenges of change at an individual, organisational and systemic level. You complete four courses to develop the learning frameworks, build learning engagement, grow connectedness with product and process development, and recognise and facilitate the achievement of current industry competencies.

Courses are delivered using face-to-face interaction, on-line learning engagement, and support and peer learning groups which are focused on an enquiry-based learning experience built on industry exposure and critical reflections on practice. This learning approach uses real and relevant assessment strategies that are authentic to the VET context, and provides a rich learning experience that allows you to develop your skills, from observation and critical analysis to product design, delivery and review.

Health

HEALTH PROMOTION

GRADUATE CERTIFICATE IN...

GRADUATE DIPLOMA IN...

MASTER OF...

- Broaden your understanding of health and wellbeing
- Qualify to work as a health promotion practitioner
- Flexible study modes help you manage your commitments



Graduate Certificate in Health Promotion

Full-time: not available full-time

Part-time: 1–2 years (maximum)

Study mode: on campus (multi-modal); online

Total courses: 4

Commence: Semester 1 or Semester 2

CRICOS code: Not available to international students on a Student Visa

Comprehensive program information and admission requirements:

www.usc.edu.au/SC511

Graduate Diploma in Health Promotion

Full-time: 1 year

Part-time: 2–4 years (maximum)

Study mode: on campus (multi-modal); online

Total courses: 8

Commence: Semester 1 or Semester 2

CRICOS code: Not available to international students on a Student Visa

Comprehensive program information and admission requirements:

www.usc.edu.au/SC611

Master of Health Promotion

Full-time: 1.5 years (minimum)

Part-time: 6 years (maximum)

Study mode: on campus (multi-modal); online

Total courses: 12

Commence: Semester 1 or Semester 2

CRICOS code: 061061D

Comprehensive program information and admission requirements:

www.usc.edu.au/SC711

Work proactively with people to address the determinants of health and wellbeing.

Based on a socio-ecological model of health, the Health Promotion suite explores contemporary health promotion at individual, group, organisation, community and population levels. Core study concepts include foundations, values and principles of health promotion; the assessment of health needs; and the planning, implementation and evaluation of health promotion programs in a range of settings.

The Graduate Certificate consists of four courses and fully articulates into the Graduate Diploma in Health Promotion. If you wish to study for a higher qualification, the Graduate Diploma fully articulates into the Master of Health Promotion.

The Graduate Certificate is ideal for professionals such as teachers, social workers, urban planners, environmental health officers, fitness trainers,

allied health workers, therapists, nurses or doctors, or anyone who wishes to develop their health promotion knowledge and skills for application within their current roles.

The Graduate Diploma and Master of Health Promotion are designed for those looking to work in designated health promotion roles, or for those wanting to develop deeper knowledge and skills in health promotion to complement their current roles. Some employers, for example Queensland Health, require applicants to have completed at least the equivalent of the Graduate Diploma in Health Promotion to be considered for employment as health promotion practitioners.

These programs give you the flexibility to study courses on campus, online or a mixture of the two delivery modes. You can change study modes at

any time during your program. Teaching, learning and assessment items develop your theoretical knowledge and understanding through the completion of practical and creative tasks. Some courses in the Health Promotion programs are available online only; however, students enrolled in online courses also have access to course coordinators for consultations and enquiries. For international students on a Student Visa—limits apply to online courses, refer to specific program notes.

PROFESSIONAL RECOGNITION

Graduates are eligible for membership of the Australian Health Promotion Association, the Public Health Association of Australia, and the International Union for Health Promotion and Education.

NURSING (GENERAL PRACTICE)

GRADUATE CERTIFICATE IN...

- Develop your knowledge and skills to practise competently
- Adapt knowledge and skills directly to your work environment
- Work in a rapidly growing nursing specialty

Graduate Certificate in Nursing (General Practice)

Full-time: not available full-time

Part-time: 1 year minimum, 2 years maximum

Study mode: on campus (blended)

Commence: Semester 1 or Semester 2

Total courses: 4

CRICOS code: Not available to international students on a Student Visa

Comprehensive program information and admission requirements:

www.usc.edu.au/SC505


Designed specifically for current practice nurses.

The Graduate Certificate in Nursing (General Practice) is designed to develop the necessary knowledge and skills to practise competently within the general practice environment, and to contribute to the further development of the specialty.

The aim is to expand the skills and knowledge base of practice nurses and support the development of flexible, informed and evidence-based practices. The

program is particularly designed to enable students to apply and adapt new knowledge and skills directly to their work environment.

To ensure accessibility and flexibility, the program is available online. Professional placement in a General Practice is included for students who are not employed as a practice nurse. Assessment is tailored to meet student learning needs.

NURSING (ADVANCED PRACTICE)

POSTGRADUATE CERTIFICATE IN...

MASTER OF...

MASTER OF... (EMERGENCY CARE)

- Professional development for Registered Nurses
- Choose a clinical specialty focus
- Gain leadership skills and enhance your practice



Postgraduate Certificate in Nursing (Advanced Practice)

Full-time: not available full-time

Part-time: 2 semesters

Study mode: on campus (blended)

Total courses: 4

Commence: Semester 1 or Semester 2

CRICOS code: Not available to international students on a Student Visa

Comprehensive program information and admission requirements:

www.usc.edu.au/SC540

Master of Advanced Nursing Practice

Full-time: 1 year

Part-time: 2 years

Study mode: on campus (blended)

Total courses: 8

Commence: Semester 1 or Semester 2

CRICOS code: Not available to international students on a Student Visa

Comprehensive program information and admission requirements:

www.usc.edu.au/SC740

Master of Advanced Nursing Practice (Emergency Care)

Full-time: 1 year

Part-time: 2 years

Study mode: on campus (blended)

Total courses: 8

Commence: Semester 1 or Semester 2

CRICOS code: Not available to international students on a Student Visa

Comprehensive program information and admission requirements:

www.usc.edu.au/SC741

Enhance your nursing practice and job opportunities.

Designed specifically for registered nurses, this suite includes study in leadership to enable you to explore opportunities for practice development, and to extend your knowledge in relation to clinical governance, legal and ethical issues.

The Postgraduate Certificate in Nursing (Advanced Practice) provides educational opportunities to advance your knowledge and skills in the area of physical, psych-social and mental health assessment, as well as explore your area of clinical expertise at

an advanced level. This is a stand-alone program, but also forms the first four courses in both the Master of Advanced Nursing Practice and the Master of Advanced Nursing Practice (Emergency Care).

The Master of Advanced Nursing Practice allows you to develop your capabilities in providing leadership in practice in the future. You can choose electives that enhance your practice and broaden your knowledge as it relates to health and nursing.

The Master of Advanced Nursing Practice (Emergency Care) offers you the opportunity to add to your knowledge and skills, with studies in the challenging area of emergency nursing.

These advanced nursing programs are delivered in blended mode. Courses use a combination of online learning and on-campus intensive workshops. Assessment is tailored to meet your clinical learning needs and provides the opportunity to demonstrate advanced assessment skills.

NURSING (MENTAL HEALTH)

MASTER OF...

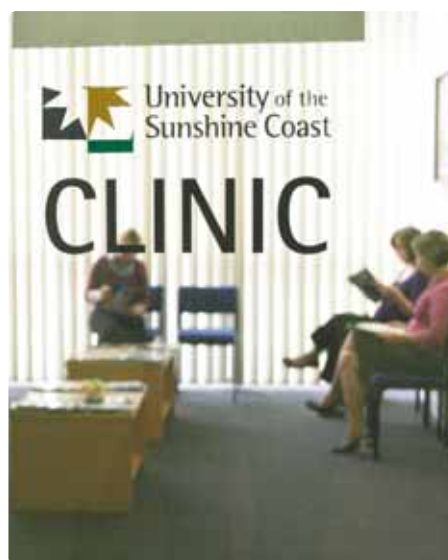
- Professional development for Registered Nurses
- Learn to work in a mental health setting
- Gain leadership skills and enhance your practice

Become a specialty mental health nurse.

This program prepares registered nurses to function as specialty mental health nurses in a variety of mental health care settings. It aims to produce graduates who are critical thinkers that effectively use available evidence and reflective practices to enhance their clinical effectiveness.

Gain an understanding of the fundamentals of modern mental health nursing practice through an examination of the history of psychiatry and different approaches to the care of people with mental disorders. Examine and critique advanced assessment tools used in mental health care, particularly in the assessment of risk. Develop your knowledge, skills and abilities, and use evidence as a base for early interventions and family work, the management of clients with alcohol and other drug dependencies, motivational interviewing, and crisis intervention.

Examine social dimensions of mental health including contemporary cultural and social theories that shape how mental disorders are conceptualised and treated. Explore and critically reflect on political, moral and ethical perspectives relevant to the



Australian mental health system. Develop your interpersonal skills through a variety of reflective practices such as peer review, consumer feedback, clinical supervision, mentorship and preceptorship.

Offered in blended mode, some courses lend themselves to weekly or regular class attendance throughout the semester, while others run in a series of full- or part-day intensive workshops with greater online support of students. Some courses in the Master of Mental Health Nursing are available online only; however, students enrolled in online courses also have access to course

Master of Mental Health Nursing

Full-time: 1 year

Part-time: 2 years

Study mode: on campus (blended)

Total courses: 8

Commence: Semester 1 or Semester 2

CRICOS code: 060945J

Comprehensive program information and admission requirements:

www.usc.edu.au/SC720

coordinators for consultations and enquiries. This flexibility in attendance responds to the varied work patterns of registered nurses and increases your ability to schedule university study around work commitments. For international students on a Student Visa—limits apply to online courses, refer to the website.

A diversity of assessment methods are used to develop a wide range of advanced mental health nursing practices, and to allow you to focus on particular aspects of your mental health nursing practice that may be unique to your setting or interest. These include practice-based assignments, seminar presentations, group work, self-assessment, peer assessment, contract learning, and reflective assessment tasks.

The Master of Mental Health Nursing has been fully accredited with the Queensland Nursing Council until 2012.

PROFESSIONAL RECOGNITION

Graduates are eligible to apply to be credentialed as a Mental Health Nurse by the Australian College of Mental Health Nurses.

MIDWIFERY

MASTER OF...

- Qualify for registration as a midwife
- Gain extensive clinical experience
- Work in maternity care settings across Australia

Master of Midwifery

Full-time: 1 year
Part-time: 2 years (depending on semester of entry)
Study mode: on campus (blended)
Total courses: 8
Commence: Semester 1 or Semester 2[†]
CRICOS code: 059558G[#]

Comprehensive program information and admission requirements:
www.usc.edu.au/SC721

[†] Applications close: 31 October 2011 for study commencing Semester 1, 2012; or 1 February 2012 for study commencing Semester 2, 2012. Late applications will not be accepted.

Please note: Applications for Registered Nurses wishing to become Midwives are closed for Semester 2, 2011 due to placement quota numbers. Applications for Registered Midwives wishing to upgrade their qualification may be accepted on a case-by-case basis.

[#] Note: International students can only commence in Semester 2 for a full-time study load.



Work as a trained professional in maternity care settings.

The Master of Midwifery program gives you the opportunity to develop the knowledge, skill and aptitude necessary for entry to midwifery practice. Clinical experience will be provided in maternity care settings across the Sunshine Coast and Gympie, giving you the opportunity to gain experience in public, private and rural maternity services.

Develop a solid foundation in maternal, fetal and neonatal anatomy and physiology, as well as clinical diagnostic approaches, pharmacology and pharmacokinetics. Focus on contemporary approaches to infant care, and gain an appreciation of sector trends, including the impact of technology on the health and wellbeing of the baby and family.

Examine the social, psychological, emotion, spiritual and cultural factors that influence health and wellbeing during the childbearing years;

and investigate perinatal health issues affecting Indigenous Australians.

Enhance your understanding of the social context within which families develop, and consider the social, political and cultural factors shaping women's health and maternity care. Explore the concept of risk and risk management strategies, and discuss complex issues in midwifery and maternity care.

The program is offered in blended mode with integration of extensive clinical experience. To maximise learning opportunities, simulation learning and case-based learning are used.

Graduates demonstrate the ANMC National Competency Standards for a Midwife and are eligible to apply for membership of the Australian College of Midwives.

For entry as a registered nurse, you must be registered with a current license to practice nursing in Australia. To gain entry as a registered midwife, you must have a current license to practice midwifery in Australia. Registered midwives may be eligible for advanced standing for prior study, but must complete a minimum of four courses (48 units).

International students must have an IELTS score of 7.0 and be eligible for registration as a nurse in Australia.

PROFESSIONAL RECOGNITION

Graduates will be eligible to apply for registration as a midwife in Australia through the Australian Health Practitioner Regulation Agency (AHPRA).

PSYCHOLOGY (CLINICAL)

MASTER OF...

- Gain Associate Membership of the Australian Psychological Society's College of Clinical Psychologists
- Undertake supervised practicum placements in a range of settings
- Extend your knowledge and research a topic of interest

Master of Psychology (Clinical)

Full-time: 2 years
Part-time: 4 years
Study mode: on campus
Total courses: 16
Commence: Semester 1
CRICOS code: 070701B

Comprehensive program information and admission requirements:
www.usc.edu.au/AR703

Gain registration to practice as a clinical psychologist.

The Master of Psychology (Clinical) trains psychology graduates in clinical psychology to meet the requirements for registration to practise as clinical psychologists.

The program has three major components—coursework in professional and clinical psychology, supervised practicum placements, and a research project and thesis. Coursework delivery is via a combination of lectures, seminars, practical exercises, written assignments, and skills demonstration and practice.

Practicum placements involve you working as a provisional clinical psychologist, under appropriate supervision, in a range of settings beginning in the University's Psychology Clinic. Your work is assessed through written reports, case presentations, professional portfolios and observation by supervisors and the course coordinator.

The research project involves a review of relevant literature leading to a research question, design and conduct of an appropriate study, data collection and analysis, and preparation of a thesis consisting of the literature review and a report of the research study.

The thesis is assessed by independent examination.

ACCREDITATION

Accredited by The Australian Psychology Accreditation Council (APAC) and approved by The Australian Psychological Society (APS) College of Clinical Psychologists as a fifth and sixth year program in Psychology, graduates of the Master of Psychology (Clinical) are eligible to apply to the Psychologists Board of Australia (PBA) for full registration.

PROFESSIONAL RECOGNITION

Graduates are eligible for Associate Membership of the Australian Psychological Society's College of Clinical Psychologists.

A career reborn

Jillian Clarke has a passion for assisting expectant mothers, as well as training others to develop their skills in this special line of work. As a Midwifery Educator at Redcliffe Hospital, Jillian maintains she has found not only her ideal role but also the coveted work–life balance. A mother of four children herself, Jillian shares her inspiration to study Masters at USC.

Profile

Jillian Clarke
Masters of Midwifery (2010)
Midwifery Educator, Redcliffe
Hospital, Redcliffe



What attracted you to the position?

I love midwifery and I loved working with students on the clinical floor, so it was a natural progression in my career to combine both my loves. I also found working shiftwork increasingly difficult with an expanding family (four babies of my own) and a self-employed husband. Midwifery education allowed me to continue with my passion while maintaining a healthy work–life balance.

What do you enjoy most about your job?

Midwifery education is extremely rewarding. I get to see the minds and hearts of students grow and blossom into women-centred midwives who care deeply about what they do. It is a privilege to have played a part in shaping and encouraging these students to realise their dream. It is amazing to see the wonderment in their eyes as they assist women to birth their babies, achieve successful breastfeeds, or watch a student feel so proud that she has mastered a difficult skill in an obstetric emergency. It is also amazing to watch a mother gaze forever at her newborn baby, or just be present when a father sees his new baby for the first time and looks at his wife with amazing pride—this is why I do this job—passion called midwifery—the best job in the world.

What exciting or interesting projects are you working on?

There is a new graduate program for midwives in their first year. I love this part, as they adapt to life as a 'new' midwife; and I enjoy helping them to find their feet and trust their midwifery instincts as they trust women and their bodies.

How has your USC degree assisted you in the performance of your duties?

I have held my position as a Midwifery Educator for six years prior to doing my Masters. It has been a long-standing desire and need to complete my Masters, but I kept having my own babies, delaying the process slightly. After completing my Masters, I have been able to lead by example and now eight midwives at my hospital have decided to do their Masters as well. This will greatly improve our knowledge and ability to critically analyse the ever-changing world of our profession, leading to improved care for women. I am hoping that midwives will also become more interested in research, which will only lead to improving the care we provide.

Why did you choose your particular USC degree?

I needed to complete my Masters if I wanted to teach at University in the future. This has become a national requirement with the introduction of the new guidelines. USC offered me the best program to achieve my goal.

Do you have any advice for others who are trying to decide on a career path such as yours?

It is extremely rewarding, never boring, always challenging, and at times breathtaking. It is hard not to live and breathe it and I never ever get sick of it. Going to work is like going to do my favourite thing every day—how lucky am I!

Humanities and Social Sciences

ARTS

GRADUATE CERTIFICATE IN...

GRADUATE DIPLOMA IN...

- Acquire new skills sets or knowledge
- Add value to your existing qualifications
- Choose your study area from a diverse range of fields

Upgrade your skills and increase your employment opportunities.

In a time when employees experience several changes of career during their work life, it is beneficial to acquire different skills sets and knowledge. The graduate Arts programs afford you the opportunity to follow your interests, to enhance your quality of life aspirations, or to satisfy curiosity-driven study.

Complete the Graduate Certificate in Arts and add value to your existing qualifications by completing a suite of four thematically based courses. The Graduate Certificate is a one-semester-equivalent full-time program that you can study across one to four semesters depending on your choice of discipline and courses. You may require a Blue Card[†] depending on the courses you choose.

The Graduate Diploma in Arts extends the offer by allowing you to study a suite of eight thematically based courses in your chosen discipline. You may elect to study all eight courses in one area, effectively completing a Faculty of Arts and Social Sciences major; or you can complete two complementary minors; or one minor and one specialisation. This is a two-semester-equivalent full-time program. You can complete it across two to six semesters, depending on your discipline and course choices.

Graduate Certificate in Arts

Full-time: 6 months (minimum)
Part-time: 2 years (maximum)
Study mode: on campus
Total courses: 4
Commence: Semester 1
CRICOS code: Not available to international students on a Student Visa
Comprehensive program information and admission requirements:
www.usc.edu.au/AR505

Graduate Diploma in Arts

Full-time: 1 year
Part-time: 2 years (maximum)
Study mode: on campus
Total courses: 8
Commence: Semester 1 or Semester 2
CRICOS code: 069714G[†]
Comprehensive program information and admission requirements:
www.usc.edu.au/AR605



You can select a minor in any of the following disciplines: 3D Design; Australian Studies; Child Protective Practices; Communication Studies; Community Development; Comparative Studies; Creative Advertising; Creative Writing; e-Media Design; English; Geography; Graphic Design; History; Indonesian; Italian; Japanese; Justice Studies; Legal Studies; Planning Studies; Politics and International Relations; Public Policy; Public Relations; Sociology; or a specialisation in Indigenous studies.

For Graduate Diploma students, majors are available in: 3D Design; Australian Studies; Communication Studies; Counselling Studies; Creative Writing; e-Media Design; English; Geography; Graphic Design; History; Human Services; Indonesian; Italian; Japanese; Journalism; Justice Studies; Politics and International Relations; Public Relations; or Sociology.

[†] Note: Some majors and minors cannot be completed in two semesters and are therefore not available to international students on a Student Visa. Check the website for details.

Blue Cards are issued by the Commission for Children and Young People and Child Guardian. For more information on Blue Cards, and how to apply, visit www.ccyepcg.qld.gov.au/bluecard/about.html

COUNSELLING

MASTER OF...

- Obtain a professional counselling degree
- Work towards professional registration
- Pursue a career as a school counsellor

Master of Counselling

Full-time: 2 years
Part-time: 4 years
Study mode: on campus
Total courses: 16
Commence: Semester 1 or Semester 2
CRICOS code: Not available to international students on a Student Visa
Comprehensive program information and admission requirements:
www.usc.edu.au/AR708

Advance your career and earn a professional counselling degree.

The Master of Counselling offers preparation for a position in counselling for practitioners from a variety of backgrounds. It provides career opportunities in private practice, education, and health and human service settings. It will interest professionals seeking a career change, or those wishing to fine-tune qualifications by adding vocational emphasis or gain an academic qualification to formalise years of work experience. It will be of particular relevance to teachers pursuing a career as a school counsellor in the independent school education system, and those interested in work in the healthcare field.

The program provides practical training in professional counselling, family therapy, and ethical practice in a live clinical context. You examine counselling interventions and clinic preparation, and undergo a clinical practice component in a USC Community Counselling Clinic. Here you gain skills by completing up to 200 hours of counselling and supervision tasks, and your team-based clinical practice is carefully supervised. You undertake an industry research project to review and analyse your counselling practice in the clinic, and prepare an article on a counselling issue related to your practice.

The Master of Counselling is available to students with an approved three-year degree in a related area such as teaching, nursing or other human services/health-related area. Responding to market demand, it produces postgraduate counsellors with extended and advanced counselling practice skills, as well as advanced skills in specific areas such as counselling in mental health, counselling in addictions, or counselling children, young people and their families.

REQUIREMENTS FOR PLACEMENTS

You must hold a current Blue Card[#] before starting your first supervised counselling experience.

Blue Card applications should be submitted with your application to USC. If you do not submit an application, or apply but are ineligible, you will not be able to undertake the professional experience components of the program.

PROFESSIONAL RECOGNITION

Graduates will be eligible to apply for membership with the Psychotherapy and Counsellors Federation of Australia (PACFA) via membership of a recognised member association and, following completion of further supervised practice, clinical registration with PACFA and registration with the Australian Register of Counsellors and Psychotherapists (ARCAP).

Blue Cards are issued by the Commission for Children and Young People and Child Guardian. For more information on Blue Cards, and how to apply, visit www.ccyepcg.qld.gov.au/bluecard/about.html

COUNSELLING PRACTICE

MASTER OF...

- Develop advanced counselling practice skills
- Gain supervised practice hours via live supervision and client contact
- Achieve Mental Health/Addiction counselling competencies

Master of Counselling Practice

Full-time: not available full-time

Part-time: 3 years

Study mode: on campus

Total courses: 12

Commence: Semester 1

CRICOS code: Not available to international students on a Student Visa

Comprehensive program information and admission requirements:
www.usc.edu.au/AR709

Enhance your clinical practice skills as a professional counsellor.

The Master of Counselling Practice is an innovative program that blends flexible delivery modes with contemporary teaching and learning practices to advance professional counsellors in their knowledge and practice of counselling. The program is well suited to people who work with individuals, families, groups and communities in various fields and circumstances, such as loss and grief issues, mental health and wellbeing, domestic violence, sexual abuse, drug and alcohol issues, relationship issues and others.

Through practical training you gain advanced knowledge, skills and experience in professional counselling, family therapy, supervision, and ethical practice competencies in a live clinical context. Courses are integrated between counselling and mental health, counselling and addictions, engaging effectively with Aboriginal people, child, adolescent and family relationship counselling, and counselling interventions focusing on experiential practices.

You undertake your clinical practice component in USC's Community Counselling Centre and complete up to 200 hours of counselling and supervision tasks as a member of a reflecting team. These counselling and supervision sessions encompass a variety of approaches and paradigms, and your team-based clinical practice is carefully supervised. You also complete an industry research project to analyse your counselling practice in the clinic, and prepare an article on a counselling issue related to your practice framework.

As a graduate, you can expect to find career opportunities in human service settings such as health, welfare, community services, human resources, private practice counselling, education,

child and family services, child protection services, family counselling and rehabilitation counselling.

The program is offered to those with an approved three-year undergraduate degree in the discipline, who wish to acquire advanced professional and counselling skills. Applicants are required to complete an additional questionnaire and attend an interview.

REQUIREMENTS FOR PLACEMENTS

You must hold a current Blue Card[#] before starting your first supervised counselling experience. Blue Card applications should be submitted with your application to USC. If you do not submit an application, or apply but are ineligible, you will not be able to undertake the professional experience components of the program.

PROFESSIONAL RECOGNITION

Graduates will be eligible to apply for membership with the Queensland Counsellors Association; Queensland Association for Family Therapists; Psychotherapy and Counselling Federation of Australia (PACFA); and Australian Register of Counsellors and Psychotherapists (ARCAP).

If you elect to follow the Mental Health or the Addiction stream, you will also be eligible to apply for registration with the Psychotherapy and Counselling Federation of Australia (PACFA) Register of Mental Health Practitioners; and Australian Register of Counsellors and Psychotherapists (ARCAP) Sub-Register of Mental Health Practitioners.

[#] Blue Cards are issued by the Commission for Children and Young People and Child Guardian. For more information on Blue Cards, and how to apply, visit www.ccyepcg.qld.gov.au/bluecard/about.html

FUTURES STUDIES

GRADUATE CERTIFICATE IN...

- Help shape the future of our world
- Contribute to the wellbeing of society
- Generate alternatives for better opportunities

Graduate Certificate in Futures Studies

Full-time: not available full-time

Part-time: 1 year

Study mode: on campus; online

Total courses: 4

Commence: Semester 1 or Semester 2

CRICOS code: Not available to international students on a Student Visa

Comprehensive program information and admission requirements:
www.usc.edu.au/AR510

Learn how to anticipate and effectively manage change.

Futures Studies is a powerful tool for managing institutional dynamics and negotiating periods of change. It seeks to empower you to identify and engage with the forces that shape your operational and working contexts. It has strategic value to anyone working in business and government where change is rapid and creative open-ended thinking a necessary tool for negotiating turbulence and rapid change. It is therefore a vehicle that develops personal and social adaptive capacity, and can contribute substantially to social and economic wellbeing.

The Graduate Certificate in Futures Studies provides you with a sound foundational knowledge of the futures field. It introduces a range of futures methods, concepts and tools designed to help you better understand your working context and future proof your organisation. The program hones leadership skills, covers a wide range of facilitation techniques, links personal and organisational values to actions and their outcomes, and stimulates creative engagement that generates a range of alternatives to business as usual for you and your organisation.

Futures Studies is therefore about the present. The present reinvented in the light of probable, possible,

and preferable futures that may occur as a result of social, technological, environmental, economic or cultural change. It hinges on flexibility of thinking, the ability to reframe context and critically assess our role in its maintenance, and to identify points of leverage that, when addressed, can lead to new possibilities.

It is increasingly becoming a frame of reference for government, business, education and community development. The core business of all such sectors is an ability to manage change, anticipate, and align strategy with desired outcomes.

This program fosters strategic foresight, which is of key relevance to emerging issues facing our region and the planet. It draws on the innate capacity of the human mind to engage in foresight or futures thinking. You learn to clarify values and develop effective strategic processes to navigate a turbulent environment where success and failure impact on both present and future generations. Courses blend academic and action-based learning to bridge the divide between theory and practice. All courses are offered in both face-to-face on campus or fully external (online) modes; with the exception of FUT700 Applied Futures Studies: Methods, Value and Strategy, which is only available online.

REGIONAL AND URBAN PLANNING *

MASTER OF...

- Gain entry to the planning profession
- Study at your own pace with distance education
- Focus on a specialist planning area

Help your community plan for a sustainable future.

The Master of Regional and Urban Planning* provides a postgraduate pathway to enter the planning profession and work as a planner. It focuses on the planning challenges of regional Australia, especially regions subject to high growth with associated environmental and community issues.

The program delivers both planning knowledge and skills, and you focus on a specialist planning area. With a strong emphasis on reflective learning, you draw on your formal and informal experiences in planning-related organisations and activities. You develop a specialist area of knowledge and are encouraged to think about major planning issues from a multi-disciplinary perspective.

Courses are delivered in one of two modes. In some courses you need to attend short intensive blocks, which are supported by books of readings and online resources. In others, you study online and receive study materials, use online resources and complete all assessment using the discussion board or written assessment in the form of reports, essays and urban place exercises.



Master of Regional and Urban Planning

Full-time: 2 years
Part-time: 4 years
Study mode: on campus (intensive); online
Total courses: 16 (equivalent)
Commence: Semester 1 or Semester 2
CRICOS code: Not available to international students on a Student Visa

Comprehensive program information and admission requirements:
www.usc.edu.au/AR705

You complete courses in contemporary planning theory, environmental and planning law, planning practice, and effectively engaging with Aboriginal people. You select a further five courses from research design: methodology of literature review, urban design, water allocation and planning, participation and conflict resolution, applied futures studies, and Indigenous peoples and sustainability.

You then complete three courses from a specialised area, such as integrated coastal zone management or climate change adaptation, plus a planning thesis or a planning research project. The thesis component is only available if you meet the academic standard (GPA 5.5) and wish to complete a thesis. Otherwise you must complete the research project and two electives.

To enter the Master of Regional and Urban Planning you will normally be required to hold a Bachelor degree from a recognised University. You will need access to a computer to enable you to use Blackboard and participate in on-line learning sessions.

Graduates can expect to find career opportunities as a planner in a regional council or planning consultancy, or as a policy analyst in the Department of Environment and Resource Management or other government departments.

* Subject to approval; due to commence Semester 1, 2012.

Subject to interim accreditation by the Planning Institute of Australia.

SOCIAL WORK (QUALIFYING)

MASTER OF...

- Advance your career with a portable, professional qualification
- Gain entry to the Australian Association of Social Workers
- Placements offer extensive field education and experience

Become an accredited practitioner and create a more socially just world.

The Master of Social Work (Qualifying)[†] prepares professionals to work with individuals, families, groups and communities across the domains of policy, practice, theory and research. It creates a new pathway for entry into the social work profession and provides opportunities for you to advance in your career and move between different forms of employment.

The program follows the accreditation requirements of the Australian Association of Social Workers (AASW) and delivers requisite knowledge, values and skills for the social work profession. You complete ten 12-unit courses plus two 36-unit (490-hour) field education placements.

In the coursework component you gain a critical understanding of society and how it has developed and is organised; knowledge of social welfare arrangements, their history and organisation, and related law in Australia; and knowledge of the individual, including human behaviour and development, personality development, life cycle stages, family and social networks, physical health and ill-health, mental health, disability, vulnerability and resilience.

Your field education placements (980 hours) provide extensive field education and experience, and enable you to integrate social work theory and practice-based learning in a structured, safe and supported learning environment. You must complete the field education placements to graduate. You may be required to undertake a criminal history check and apply for a Blue Card[#]. You must have your own means of transport.

As a graduate, you will be well prepared to work in government organisations, community agencies and private practice in both local and international contexts. As a practitioner, you will be proficient in critically analysing and formulating creative responses to social, political, cultural, historical or gendered disadvantage faced by vulnerable citizens through various modes of practice, such as case management, counselling, policy analysis and development, organisational management, social action, advocacy, community development, education and research.

Depending on your educational history, there are two pathways of entry into this masters program. Generally, applicants will have a completed bachelor

Master of Social Work (Qualifying)

Full-time: 2 years
Part-time: 4 years
Study mode: on campus
Total courses: 16 (equivalent)
Commence: Semester 1
CRICOS code: 073869J

Comprehensive program information and admission requirements:
www.usc.edu.au/AR707

degree deemed relevant by the faculty to social work. Other applicants who hold a bachelors degree without any social, health or behavioural science background, will need to complete prior to entry three specified foundation courses in social work, sociology and psychology. If you are required to complete the prerequisite courses, you can do so either as a Visiting Student or by enrolling in the Graduate Certificate in Arts. Depending on your course selection, you can complete these requirements across one or two semesters.

PROFESSIONAL RECOGNITION

Graduates will be eligible for membership to the AASW and to practice as professional social workers. Membership to the AASW enables you to apply to become a mental health accredited practitioner, which attracts a Medicare rebate for private practitioners.

[†] Provisionally accredited by the Australian Association of Social Workers (AASW).

[#] Blue Cards are issued by the Commission for Children and Young People and Child Guardian. For more information on Blue Cards, and how to apply, visit www.ccyecg.qld.gov.au/bluecard/about.html

Science and Sustainability

CLIMATE CHANGE ADAPTATION

GRADUATE CERTIFICATE IN...

MASTER OF...

- Learn to assess and manage climatically induced change
- Work towards accreditation as an environmental practitioner
- Intensive course delivery allows you to qualify faster

Proactively address the implications of climate change.

In this suite, you gain an in-depth understanding of the natural and human-induced factors responsible for the rapid rates of environmental and climate change. You examine the types of governance and community-based responses required to address the impacts and vulnerabilities, and acquire practical problem-solving skills in adaptive environmental assessment and integrated management systems.

The theoretical understanding and practical tools enable you, as a practitioner, to integrate best-practice vulnerability assessment tools and techniques effectively with nationally and internationally endorsed environmental management systems. The purpose is to mitigate unwanted effects of climate change and manage project outcomes to ensure continuous improvement in the environmental conditions and the sustainability of natural resources.

You acquire skills through a combination of lectures, readings, group discussions, practical projects and the use of interactive modelling tools. Your assessment is based on a combination of individual and group project tasks. Some classes use environmental simulation models to develop skills in problem definition, data and information manipulation, management and application. These tools support the preparation of vulnerability

assessment documents and environmental management plans for environmental and natural resources management.

The Graduate Certificate consists of four courses and articulates into the 12-course Master of Climate Change Adaptation. If you enrol in the masters program, you may choose to exit after completing the first four courses with the Graduate Certificate and achieve a recognised qualification. Subject to certain time conditions, you can return to upgrade your qualification later. Similarly, if you choose to exit the masters program after completing eight courses, you may be awarded a Graduate Diploma in Climate Change Adaptation. Please note that there is no direct entry into the Graduate Diploma.

PROFESSIONAL RECOGNITION

Graduates of the Master of Climate Change Adaptation can work towards accreditation as an environmental practitioner from the Environment Institute of Australia and New Zealand (EIANZ), or equivalent overseas accreditation body. Completing the Graduate Certificate in Climate Change Adaptation only contributes towards this accreditation.

INTENSIVE DELIVERY

The Climate Change Adaptation programs are run in an intensive mode. All 300-level courses are offered

Graduate Certificate in Climate Change Adaptation

Full-time: 6 months (minimum)
Part-time: 2 years
Study mode: on campus; on campus (intensive)
Total courses: 4
Commence: Semester 1 or 2
CRICOS code: 063681D[†]

Comprehensive program information and admission requirements:
www.usc.edu.au/SC508

Master of Climate Change Adaptation

Full-time: 1.5 years (minimum)
Part-time: 6 years (maximum)
Study mode: on campus (intensive)
Total courses: 12
Commence: Any time as applicable to individual student course timetable
CRICOS code: 063013G[†]

Comprehensive program information and admission requirements:
www.usc.edu.au/SC708

nominally during Semester 1 or 2 each year, but are also run in intensive session. Students should refer to the Faculty of Science, Health and Education course schedule, as sessions can vary from year to year. Intensive delivery requires a student activity investment of 120 hours. Approximately 60 hours will be undertaken over 6–7 consecutive days on campus for lecture-based courses. In most cases, courses run from for a week including weekends. The remaining 60 hours is required for independent student-learning activities, both before and after the on-campus component, which may include readings, exercises and the preparation of assessment items.

[†] International students on a Student Visa: please be aware that some courses in this program require project work and/or independent study and therefore have limited on-campus contact. Check the website for details.

SUSTAINABILITY

GRADUATE CERTIFICATE IN...

- Help chart a sustainable future
- Learn to direct societal change
- You CAN make a difference

Make a difference and become an innovator in sustainability.

Study this innovative program to gain an understanding of the principles underpinning sustainability. You learn about the latest tools and technologies to achieve sustainable outcomes at individual and societal levels, and explore systems approaches to chart sustainable futures.

You explore sustainability in contemporary society and examine aspects such as socio-ecological trends, historical underpinnings, leadership and governance, and future scenarios. You are encouraged to examine your own personal ideologies and to reflect on educational and societal influences.

From individual and societal perspectives, you study the most pressing sustainability issues and design strategies focused on achieving sustainability at local, regional and global scales. Encouraged to think as a global citizen, you apply the latest theory to real-world examples.



As a sustainability professional, you will have innovative and adaptable problem-solving skills for a rapidly changing world. Skills enabling you to tackle pressing issues such as climate change and take advantage of opportunities such as the emerging green economy. As a graduate, you can expect to find employment in all tiers of government and private industry, both within Australia and internationally.

With both on-campus and online modes of study, as well as the option of mid-year entry, studying sustainability has never been more accessible.

Graduate Certificate in Sustainability

Full-time: not available full-time
Part-time: 1 year
Study mode: on campus; online
Commence: Semester 1 or Semester 2
Total courses: 4
CRICOS code: Not available to international students on a Student Visa

Comprehensive program information and admission requirements:
www.usc.edu.au/SC525

Questions? Answered.

Student Administration

Your primary contact for information about how to apply and enrol, fees, financial assistance and scholarships, program admission requirements, special entry programs, applying for credit transfer, examinations and results, and graduation.

Tel: 07 5430 2890
Email: information@usc.edu.au
On campus: Student Central, Building C
www.usc.edu.au/studentadministration

Student Services

Contact Student Services for advice about academic and study support, accommodation and housing, careers and employment, disability and equity, health and wellbeing, Indigenous Australian student support and Orientation.

Tel: 07 5430 1226
Email: studentservices@usc.edu.au
On campus: Student Central, Building C
www.usc.edu.au/student-services

USC International

USC International is your primary point of contact if you are an international student. They will assist with program and course information (including changes to your program), improving your English, visa matters (including permission to work, applying for a visa, visa conditions), OSHC (Overseas Student Health Cover) and other medical information, accommodation, airport transfers, and activities and events. USC International is also your contact for the GO (Global Opportunities) Program.

Tel: 07 5430 2843
(outside Australia +61 7 5430 2843)
Fax: 07 5430 2836
(outside Australia +61 7 5430 2836)
Email: international@usc.edu.au
Email: GOProgram@usc.edu.au
Facebook: USC International
www.usc.edu.au/international
www.usc.edu.au/goprogram

Career Connection

Tel: 07 5456 5038
Email: careerconnection@usc.edu.au
www.usc.edu.au/careerconnection

Disability Services

Tel: 07 5430 1226
Email: disabilitysupport@usc.edu.au
www.usc.edu.au/disabilitysupport

Indigenous Services

Tel: 07 5430 1226
Email: Indigenous_Services@usc.edu.au
www.usc.edu.au/indigenous

Scholarships

Tel: 07 5459 4743
Email: scholarships@usc.edu.au
www.usc.edu.au/scholarships

Faculties

Student Administration is your primary contact point, but you may be referred to a faculty staff member for specialist information on courses and programs, or research opportunities.

Faculty of Arts and Social Sciences

Tel: 07 5430 1259
Email: artsfaculty@usc.edu.au
On campus: Building D
www.usc.edu.au/artsandsocsci

Faculty of Business

Tel: 07 5430 1221
Email: businessfaculty@usc.edu.au
On campus: Building K
www.usc.edu.au/business

Faculty of Science, Health and Education

Tel: 07 5430 2869
Email: SHEinfo@usc.edu.au
On campus: Building H
www.usc.edu.au/science



Update me

Register to receive email updates about careers, courses and programs, and what is happening at USC.

www.usc.edu.au/updates

USC Information events

Regular information events are held throughout the year.

Tel: 07 5456 5000
Email: options@usc.edu.au
www.usc.edu.au/info
www.usc.edu.au/openday

SOCIAL MEDIA www.usc.edu.au/socialmedia



Facebook

www.facebook.com

Search for:

- University of the Sunshine Coast International
- USC Buranga Centre
- USC Sport
- USC student Alise
- USC student Sebastion
- USC parent Denise



YouTube

www.youtube.com/unisunshinecoast



Flickr

www.flickr.com/unisunshinecoast

Other useful contacts

Accommodation

Varsity Apartments

Tel: 07 5450 2000
Email: info@varsityapartments.com.au
www.varsityapartments.com.au

UniCentral

Tel: 07 5476 8855
Email: office@unicentral.net.au
www.unicentral.net.au

The Village

Tel: 07 5430 2500
Email: info@thevillage.net.au
www.thevillage.net.au

Local real estate agents

www.realestate.com.au
www.yellowpages.com.au

Centrelink

ABSTUDY

Tel: 132 317

Youth and Student Services (including Youth Allowance and AUSTUDY)

Tel: 132 490
www.centrelink.gov.au

Commission for Children and Young People and Child Guardian

Blue Cards

Tel: 1800 113 611
Email: info@ccypcg.qld.gov.au
www.ccypcg.qld.gov.au/bluecard

HECS-HELP/FEE-HELP enquiry line

Australian Government, Department of Education, Employment and Workplace Relations

Tel: 1800 020 108
www.goingtouni.gov.au

Queensland Tertiary Admissions Centre (QTAC)

Tel: 1300 467 822
www.qtac.edu.au

Queensland Studies Authority (QSA)

Tel: 07 3864 0299
Email: office@qsa.qld.edu.au
www.qsa.qld.edu.au

Translink

Tel: 131 230
www.translink.com.au

University terminology

Contact hours

Contact hours are the number of hours students are expected to attend classes on campus. A full-time student spends about 12 hours per week in classes, plus between 20 and 40 hours studying per week (five to 10 hours per course).

Faculty / School

A faculty is an organisational area within the University devoted to particular academic programs and research (eg Faculty of Science, Health and Education). Each faculty is headed by a professor, known as a Dean. Schools are organisational areas within a faculty (eg School of Communication in the Faculty of Arts and Social Sciences).

Wondering what it all means?

For a complete list of university terms, visit the website www.usc.edu.au/terms

Full-time / part-time study

A full-time student studies at least three courses per semester. The standard full-time workload is four courses per semester. A part-time student studies either one or two courses per semester, with two courses being standard.

Lecture / Tutorial

A lecture involves a member of teaching staff presenting course content to students. Most courses have one weekly lecture. A tutorial or practical (also known as workshop or lab) is a forum for discussion, interaction, presentation and debate. They often give students an opportunity for the practical application of course content.

Undergraduate student / postgraduate student

An undergraduate student studies an associate degree, bachelor degree or honours program. A postgraduate student studies a postgraduate coursework program (eg Graduate Certificate, Graduate Diploma, Masters by coursework) or a higher degree by research (eg Masters by research, Doctor of Philosophy).

Semester / Session

The academic year is divided into two main semesters. Generally, Semester 1 runs from February to June, and Semester 2 from July to November. Session 11 (Summer) is a teaching period between December and mid-February. Summer courses are delivered in intensive mode. The academic year is also divided into multiple sessions. These sessions are generally for postgraduate studies.

Study USC

Increase your career potential

Postgraduate Studies Information Evening | 9 November 2011 | www.usc.edu.au/postgrad



University of the Sunshine Coast
QUEENSLAND, AUSTRALIA
Tel: 07 5430 1234
Fax: 07 5430 1111
Web: www.usc.edu.au
CRICOS Provider Number: 01595D



University of the
Sunshine Coast
The best of both worlds